



WILLOW WEEKLY

www.willowsschool.org

Dec 28, 2021

NEXT WEEK AT A GLANCE/PLEASE MARK YOUR CALENDAR!

IVY LEAGUE KIDS Before & Afterschool Care 630AM-6:00PM * ivyleaguekids.org

The office will be **CLOSED** Thursday and Friday for the holiday

Monday, January 3 – Concert Band (Woodwinds) 7:30am

Yearbook Club 3:13-4:13pm

Access Club 3:13-4:13pm

Junior High Cheer Practice 3:30-5:00pm

Boys Basketball Practice 3:30-5:00pm

Tuesday, January 4- Beginning Band (Woodwinds) 7:30am

Access Club 3:13-4:13pm

2nd Grade Cheer Club 3:13-4:13pm

Junior High Cheer Practice 3:30-5:00pm

Boys Basketball vs Washington Red-AWAY

Reading Club 3:13-4:13pm

Wednesday, January 5 - Concert Band (Bass/Percussion) 7:30am

Access Club 3:13-4:13pm

Junior High Cheer Practice 3:30-5:00pm

Boys Basketball vs Washington Blue-HOME

Thursday, January 6- Beginning Band (Brass/Percussion) 7:30am

Access Club 3:13-4:13pm

Theme Day-Tropical day*wear a tropical shirt

2nd Grade Cheer Club 3:13-4:13pm

Junior High Cheer Practice 3:30-5:00pm

Boys Basketball vs Park Red-HOME

Reading Club 3:13-4:13pm

Friday, January 7- Concert Band (All members)

End of 2nd Quarter/First Semester

Junior High Cheer Practice 3:30-5:00pm

Boys Basketball Practice 3:30-5:00pm

Coming up:

Friday, January 14- 2nd Quarter Report Cards go home with students

Monday, January 17- Dr. Martin Luther King Day No School

Wednesday, January 19- 8th Grade Picture Retake Day / 8th grade Parent Night at Argo

*Correction**Monday, January 31- School Improvement Day Early Dismissal 1130am***

FREE School Meals
for **ALL** Students



Monday, Jan 3- Chicken Nuggets

Tuesday, Jan 4- Corned Beef

Wednesday, Jan 5- Beef Hot Dog

Thursday, Jan 6- Turkey Breast

Friday Jan 7- Bosco Stick

WINTER WEATHER

A friendly reminder to parents to bundle up their student(s) for school

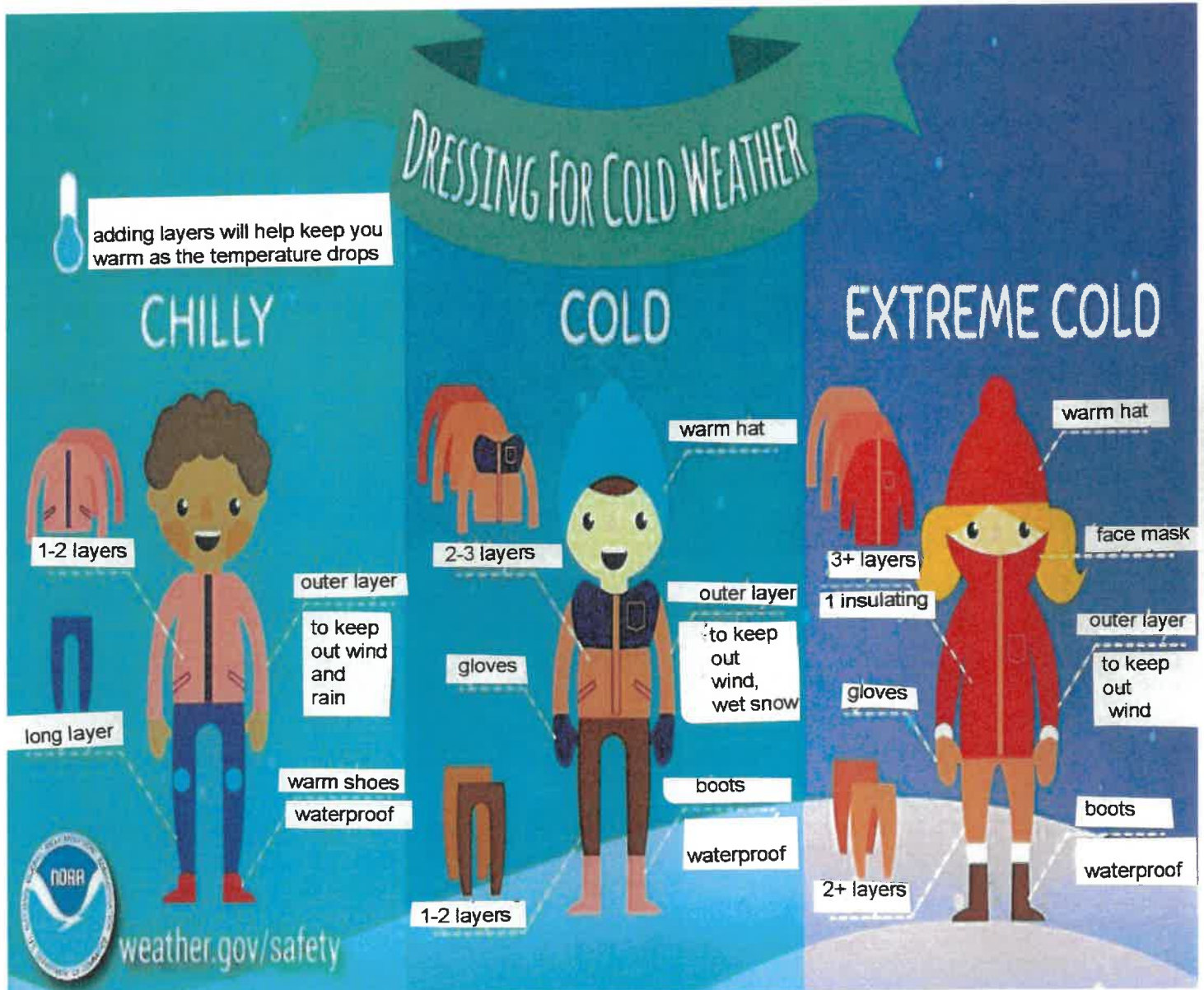
8:10am Morning Supervision, Is it indoor or outdoor?

Indoors: The temperature is 19 degrees or lower or its raining. K-8 Students will walk directly to their class starting at 8:10am

Outdoors: The temperature is 20 degrees and above. All K-8 students will remain outside until the bell rings.

Recess: The temperature is 20 degrees and above. Students will go outdoors for recess/ mask breaks

Staff supervision begins at 8:10am. Do **NOT** leave your child unattended prior to that time. If you are in need of child care, please call Ivy League Kids at (815) 464-1265 or visit the web page at: <https://ivyleaguekids.org/>



WALKER PARK REC CENTER

GIRLS BASKETBALL LEAGUE 2022



**Pleasant Dale
Park District**

JANUARY 17-MARCH 12

1ST GRADE-8TH GRADE

\$92R/\$120NR

**REGISTRATION
DEADLINE
NOVEMBER
24TH!!**

**FOR MORE INFORMATION VISIT PDPARKS.ORG
OR CALL (630) 662-6220**



**Flexible
Scheduling
Available!**



Ivy League Kids

BEFORE & AFTER SCHOOL

Willow Springs School District 108

Willow Springs School

HOURS

6:30am until school starts.

After school until **6:00pm**.



A rewarding program that
balances each child's
intellectual, physical, social,
creative & emotional needs.

ACTIVITIES

- 🍀 **Sports & Recreation**
- 🍀 **Arts & Crafts**
- 🍀 **STEM Education**
- 🍀 **Homework Help**
- 🍀 **Character Building**
- 🍀 **Much More!**

Accepts Illinois Action for
Children Child Care
Assistance Program.

REGISTRATION FEE IS \$40 • Convenient & Affordable!

Fee Schedule	AM Only	PM Only	AM&PM
Attend 5 DAYS	\$78.00	\$83.00	\$124.00
Attend 4 DAYS	\$66.00	\$71.00	\$105.00
Attend 3 DAYS	\$51.00	\$55.00	\$82.00
Attend 2 DAYS	\$36.00	\$41.00	\$60.00
Attend 1 DAY	\$20.00	\$21.00	\$32.00
Drop Off	\$26.00	\$27.00	\$37.00

Half Day Up Charge \$10.00 child must bring a sack lunch.

**SERVING
K - 8th**

**REGISTER
TODAY!**

WWW.IVYLEAGUEKIDS.ORG

815-464-1265



TeacherEase

Welcome to Willow Springs School online student information database, **Teacherease**. Here as parents, you have access to your student's(s'):

- Registration information (for edit and updating contact info)
- Grades
- Attendance
- School meal tracking and billing
- Discipline reports
- Current grades in his or her classes, missing assignments

We hope you will follow the instructions below and begin the important task of keeping track of your student's grades, attendance, school communications and school fees throughout the year.

1. Go to the App store and search : TeacherEase
2. It is free to download. Click GET
3. Type in your email address and password (this will be sent to your e-mail address) If you do not have a password please call Ms.Flores at 708-839- 6828 or email at cflores@willowspringsschool.org . A link will be sent to your email address on file.

Please **OPT IN** to stay up to date on important messages or calls from Willow Springs School.

Remember to choose your preferred method of contact. You can choose phone calls, email, text messaging or chose all of them. Our automated number is **1-833-712-2713**

****Please add this phone number to your mobile phone as NOT SCAM OR SCAM LIKELY**

Menus subject to
change without
notice.

BREAKFAST JANUARY 2022

Full Breakfast \$1.60
Extra Entrée \$0.75

SUNDAY	MONDAY	TUESDAY	WEDNESDAY	THURSDAY	FRIDAY	SATURDAY
	HAPPY NEW YEAR	Happy NEW YEAR				1
2	3 *Froot Loops Kit Milk Juice Pinapple Cup	4 *Golden Graham Kit Milk Juice Mandarin Orange Cup	5 *Multigrain Cheerios kit Milk Juice Pear Cup	6 *Cinn. Toast Crunch Kit Milk Juice Mix Fruit Cup	7 Cocoa Puffs Milk Juice Peach Cup	8
9	10 *Froot Loops Kit Milk Juice Pinapple Cup	11 *Golden Graham Kit Milk Juice Mandarin Orange Cup	12 *Multigrain Cheerios kit Milk Juice Pear Cup	13 *Cinn. Toast Crunch Kit Milk Juice Mix Fruit Cup	14 Cocoa Puffs Milk Juice Peach Cup	15
16	17 No School Martin Luther King's Day	18 *Golden Graham Kit Milk Juice Mandarin Orange Cup	19 *Multigrain Cheerios kit Milk Juice Pear Cup	20 *Cinn. Toast Crunch Kit Milk Juice Mix Fruit Cup	21 Cocoa Puffs Milk Juice Peach Cup	22
23	24 *Froot Loops Kit Milk Juice Pinapple Cup	25 *Golden Graham Kit Milk Juice Mandarin Orange Cup	26 *Multigrain Cheerios kit Milk Juice Pear Cup	27 *Cinn. Toast Crunch Kit Milk Juice Mix Fruit Cup	28 Cocoa Puffs Milk Juice Peach Cup	29
30 	31 *Froot Loops Kit Milk Juice Pinapple Cup					

Please DO NOT send students early as we do not have supervision before 8:00 am.

*** All Bread Items Are Whole Grain or Multi Grain**

WILLOW SPRINGS SCHOOL DISTRICT 108

JANUARY 2022



STUDENT LUNCH MENU



Mon

Tue

Wed

Thu

Fri

<p>3</p> <p>CHICKEN NUGGETS VEGETABLE FRUIT BREADSTICK MILK</p>	<p>4</p> <p>CORNED BEEF SANDWICH VEGETABLE FRUIT MILK</p>	<p>5</p> <p>BEEF HOT DOG ON A BUN KETCHUP VEGETABLE FRUIT CHIPS MILK</p>	<p>6</p> <p>TURKEY BREAST SANDWICH WITH CHEESE VEGETABLE FRUIT GOGURT MILK</p>	<p>7</p> <p>BOSCO STICKS MARINARA SAUCE VEGETABLE FRUIT MILK</p>
<p>10</p> <p>HAMBURGER ON A BUN KETCHUP VEGETABLE FRUIT CHIPS MILK</p>	<p>11</p> <p>ROAST BEEF SANDWICH ON BREAD WITH CHEESE VEGETABLE FRUIT MILK</p>	<p>12</p> <p>BEEF AND BEAN BURRITO SALSA VEGETABLE FRUIT MILK</p>	<p>13</p> <p>CORNED BEEF SANDWICH VEGETABLE FRUIT CHIPS MILK</p>	<p>14</p> <p>CHICKEN PATTIE ON A BUN BBQ SAUCE VEGETABLE FRUIT MILK</p>
<p>17</p> <p>MARTIN LUTHER KING'S DAY NO STUDENT ATTENDANCE</p>	<p>18</p> <p>TURKEY SANDWICH VEGETABLE FRUIT JELLO MILK</p>	<p>19</p> <p>CHICKEN LUNCH MEAT SANDWICH VEGETABLE FRUIT CHIPS MILK</p>	<p>20</p> <p>MINI CORN DOGS VEGETABLE FRUIT MILK</p>	<p>21</p> <p>PIZZA LUCHABLE VEGETABLE FRUIT PUDDING CUP MILK</p>
<p>24</p> <p>ROAST BEEF SANDWICH ON BREAD VEGETABLE FRUIT MILK</p>	<p>25</p> <p>BEEF HOT DOG ON A BUN VEGETABLE FRUIT CHIPS MILK</p>	<p>26</p> <p>REGULAR CORN DOG MUSTARD VEGETABLE FRUIT MILK</p>	<p>27</p> <p>TURKEY HAM SANDWICH VEGETABLE FRUIT MILK</p>	<p>28</p> <p>SOY PEANUT BUTTER AND JELLY SANDWICH VEGETABLE FRUIT PUDDING MILK</p>
<p>31</p> <p>SCHOOL IMPROVEMENT DAY EARLY STUDENT DISMISSAL</p>		<p>ALL LUNCHES ARE SUBJECT TO CHANGE.....</p>		

Willow Springs School District #108

2021-2022 School Calendar

July						
Sun	Mon	Tues	Wed	Thurs	Fri	Sat
					1	2
3	4	5	6	7	8	9
10	11	12	13	14	15	16
17	18	19	20	21	22	23
24	25	26	27	28	29	30
31						

August						
Sun	Mon	Tues	Wed	Thurs	Fri	Sat
1	2	3	4	5	6	7
8	9	10	11	12	13	14
15	16	17	18	19	20	21
22	23	24	25	26	27	28
29	30	31				

September						
Sun	Mon	Tues	Wed	Thurs	Fri	Sat
			1	2	3	4
5	6	7	8	9	10	11
12	13	14	15	16	17	18
19	20	21	22	23	24	25
26	27	28	29	30		

October						
Sun	Mon	Tues	Wed	Thurs	Fri	Sat
					1	2
3	4	5	6	7	8	9
10	11	12	13	14	15	16
17	18	19	20	21	22	23
24	25	26	27	28	29	30
31						

November						
Sun	Mon	Tues	Wed	Thurs	Fri	Sat
	1	2	3	4	5	6
7	8	9	10	11	12	13
14	15	16	17	18	19	20
21	22	23	24	25	26	27
28	29	30				

December						
Sun	Mon	Tues	Wed	Thurs	Fri	Sat
			1	2	3	4
5	6	7	8	9	10	11
12	13	14	15	16	17	18
19	20	21	22	23	24	25
26	27	28	29	30	31	

January						
Sun	Mon	Tues	Wed	Thurs	Fri	Sat
						1
2	3	4	5	6	7	8
9	10	11	12	13	14	15
16	17	18	19	20	21	22
23	24	25	26	27	28	29
30	31					

February						
Sun	Mon	Tues	Wed	Thurs	Fri	Sat
		1	2	3	4	5
6	7	8	9	10	11	12
13	14	15	16	17	18	19
20	21	22	23	24	25	26
27	28					

March						
Sun	Mon	Tues	Wed	Thurs	Fri	Sat
		1	2	3	4	5
6	7	8	9	10	11	12
13	14	15	16	17	18	19
20	21	22	23	24	25	26
27	28	29	30	31		

April						
Sun	Mon	Tues	Wed	Thurs	Fri	Sat
					1	2
3	4	5	6	7	8	9
10	11	12	13	14	15	16
17	18	19	20	21	22	23
24	25	26	27	28	29	30

May						
Sun	Mon	Tues	Wed	Thurs	Fri	Sat
1	2	3	4	5	6	7
8	9	10	11	12	13	14
15	16	17	18	19	20	21
22	23	24	25	26	27	28
29	30	31				

June						
Sun	Mon	Tues	Wed	Thurs	Fri	Sat
			1	2	3	4
5	6	7	8	9	10	11
12	13	14	15	16	17	18
19	20	21	22	23	24	25
26	27	28	29	30		

- No School
- Early Dismissal 11:30
- Early Dismissal 1:30
- Parent Teacher Conference

- Midterm Reports Go Home
- Report Card Go Home
- First Day of School
- Last Day of School