



WILLOW WEEKLY

www.willowsschool.org

Dec 3, 2021

NEXT WEEK AT A GLANCE/PLEASE MARK YOUR CALENDAR!

IVY LEAGUE KIDS Before & Afterschool Care 630AM-6:00PM * ivyleaguekids.org

Monday, December 6 –Concert Band (woodwinds) 7:30am

School Improvement Day early Dismissal 11:30am

Tuesday, December 7- Beginning Band (Woodwinds) 7:45am

2nd Grade Cheer Club 3:13-4:13pm

PFC popcorn day order forms DUE today

Access Club 3:13-4:13pm

Boys Basketball vs Washington Blue-HOME

Junior High Cheer 3:30-5:00pm

Wednesday, December 8- Concert Band (Brass/Percussion) 7:30am

PFC Popcorn day

Boys Basketball vs McClure White-AWAY

4th Grade Art Club 3:13-4:13pm

Junior High Cheer 3:30-5:00pm

Access Club 3:13-4:13pm

Thursday, December 9- Beginning Band (Brass/Percussion) 7:30am

Theme day- Pajama Day

2nd Grade Cheer Club 3:13-4:13pm

Boys Basketball vs Washington Red-AWAY

5th Grade Art Club 3:13-4:13pm

Junior High Cheer 3:30-5:00pm

Access Club 3:13-4:13pm

Friday, December 10- Concert Band (All members) 7:30am

Spirit Day- Wear your spirit wear or blue and gold

2nd Quarter Mid Term Reports go home with students

Boys Basketball Practice 3:30-5:00pm

Junior High Cheer 3:30-5:00pm

Access Club 3:13-4:13pm

***Coming up:** Monday, Dec 13- 16 -Holiday Fair-Volunteers needed*

Tuesday, December 14- Holiday Concert 2nd Grade at 6:00pm (with students arriving at 5:45)

Wednesday, December 15 – Holiday Concert 1st Grade at 6:00pm (with students arriving at 5:45)

Thursday, December 16- Holiday Concert Kindergarten at 6:00pm (with students arriving at 5:45)

Thursday, December 16- 8th Grade Picture Retake Day

Friday, December 17-School Improvement Day Early Dismissal 11:30am

Monday, December 20 to Friday, December 31- Winter Break- No School

Monday, January 3- Classes Resume

Friday, January 7- End of 2nd Quarter/First Semester

Friday, January 14- 2nd Quarter Report Cards go home with students

Monday, January 17- Dr. Martin Luther King Day No School

Wednesday, January 26–Eight Grade Parent Night at Argo 7:15pm

FREE School Meals for ALL Students



Monday, Dec 6- Early Dismissal-No Lunch 1130am
Tuesday, Dec 7- Hamburger on a Bun
Wednesday, Dec 8- Chicken Nuggets
Thursday, Dec 9- Roast Beef
Friday, Dec 10- Cheese Quesadillas

SAVE THE DATE:

Penguin Patch Holiday
Shop will be at our school:

**Monday, December 13 -
Thursday, December 16**

Students will shop for their loved ones during the school day. Gifts range from \$0.25- \$12.00. If you would like to volunteer please call 708-839-6828 or email Ms.Flores cflores@willowspringsschool.org Even if you only have 30 minutes to volunteer that will help.



Substitute Lunchroom/ Recess Monitors needed

Position Summary: The Lunchroom/Recess Attendant will monitor and assist classrooms during lunch periods if another permanent . This is a part-time, benefits-ineligible position. The work schedule will be: Monday - Friday, from 10:30am to 1:30pm.

Principal Duties And Responsibilities

- Provide supervision of students during lunch periods in the cafeteria and recess
- Monitors student behavior in assigned areas to ensure compliance with school rules and procedures.
- Manages misconduct by students in tactful and diplomatic manner.
- Must be able to lift 30lbs plus Other duties as assigned

How to apply: Call Mrs. Wacker to schedule an appointment to fill out an application 708-839-6828

**HELP
WANTED
APPLY
WITHIN**

SPECIAL EDUCATION INSTRUCTIONAL ASSISTANT

Position Summary: Duties include, but not limited to: assist with the delivery of instructional program planned by teacher; perform routine tasks and duties as assigned by teacher to allow teacher to spend vast majority of day instructing students; perform lunchroom and playground duties as assigned by administration.

Qualifications

Must have or qualify for the Illinois Paraprofessional license through the Illinois State Board of Education

Salary/Benefits: Commensurate with experience and education.

How to Apply: Email resume and letter of interest to: mlitko@willowspringsschool.org

Meghan Litko,
Director of Special Education



Holiday Music Concert



Due to CoVid restrictions this will be a ticketed event.
Only students performing will receive 2 guest tickets.



Tues, December 14- 2nd Grade Concert
Wed, December 15 – 1st Grade Concert
Thurs, December 16- Kindergarten Concert
*Concert will begin at 6:00pm**
*(*students should arrive at 5:45pm)*



WILLOW SPRINGS SCHOOL
WOLVERINES



Parents for Children



POPCORN DAY

PFC will be hosting a Popcorn Day on Wednesday, December 8th.

Bags of Popcorn will be \$1. Please complete the order form below and return it with your student by **Tuesday, December 7th.**

Student Name: _____

Homeroom Teacher: _____

Grade Level: _____

Number of Popcorn Bags: _____

WINTER WEATHER

A friendly reminder to parents to bundle up their student(s) for school

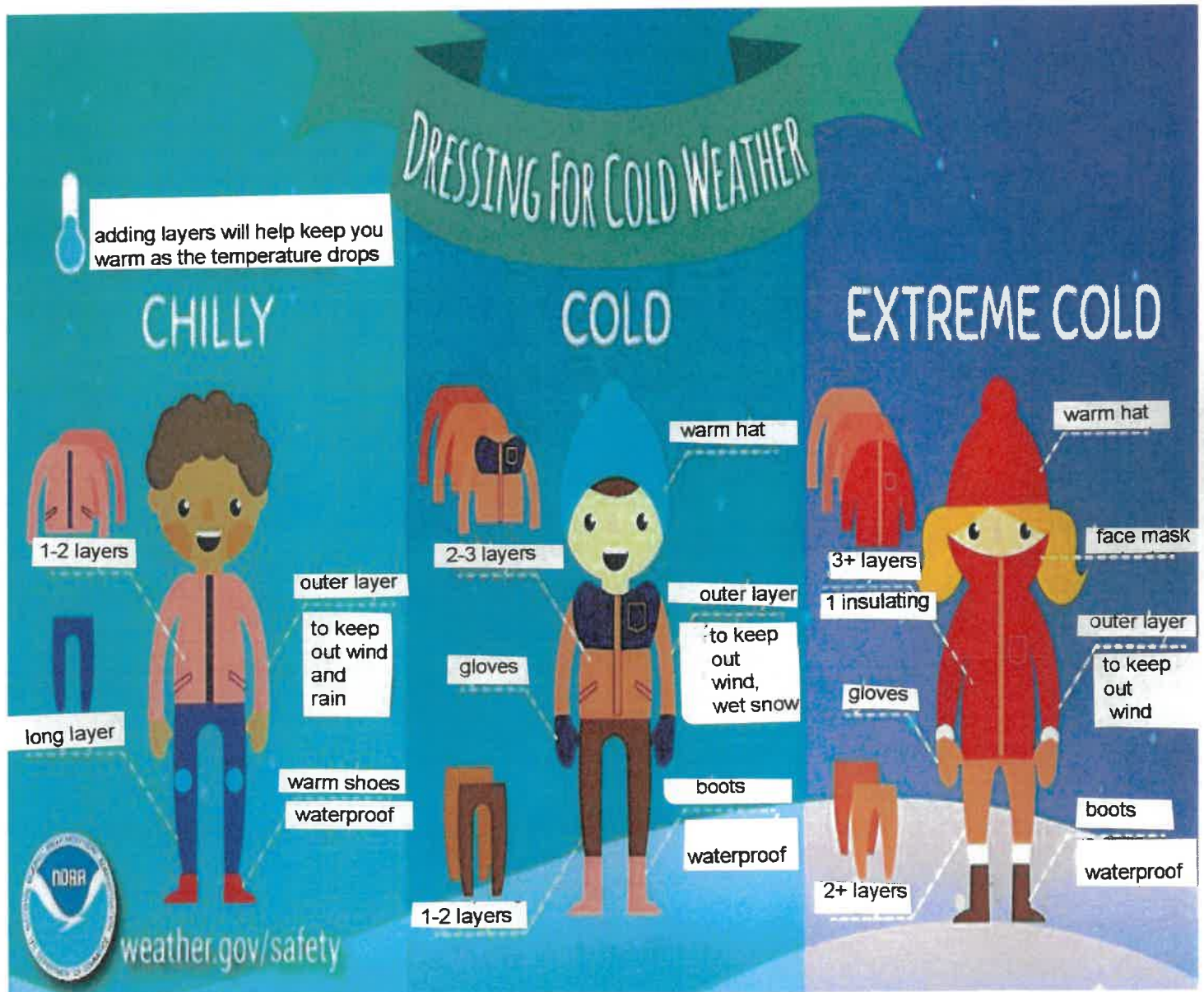
8:10am Morning Supervision, Is it indoor or outdoor?

Indoors: The temperature is 19 degrees or lower or its raining. K-8 Students will walk directly to their class starting at 8:10am

Outdoors: The temperature is 20 degrees and above. All K-8 students will remain outside until the bell rings.

Recess: The temperature is 20 degrees and above. Students will go outdoors for recess/ mask breaks

Staff supervision begins at 8:10am. Do **NOT** leave your child unattended prior to that time. If you are in need of child care, please call Ivy League Kids at (815) 464-1265 or visit the web page at: <https://ivyleaguekids.org/>





**Flexible
Scheduling
Available!**



Ivy League Kids

BEFORE & AFTER SCHOOL

Willow Springs School District 108

Willow Springs School

HOURS







6:30am until school starts.

After school until **6:00pm**.



A rewarding program that
balances each child's
intellectual, physical, social,
creative & emotional needs.

ACTIVITIES

-  **Sports & Recreation**
-  **Arts & Crafts**
-  **STEM Education**
-  **Homework Help**
-  **Character Building**
-  **Much More!**

Accepts Illinois Action for
Children Child Care
Assistance Program.

REGISTRATION FEE IS \$40 • Convenient & Affordable!

Fee Schedule	AM Only	PM Only	AM&PM
Attend 5 DAYS	\$78.00	\$83.00	\$124.00
Attend 4 DAYS	\$66.00	\$71.00	\$105.00
Attend 3 DAYS	\$51.00	\$55.00	\$82.00
Attend 2 DAYS	\$36.00	\$41.00	\$60.00
Attend 1 DAY	\$20.00	\$21.00	\$32.00
Drop Off	\$26.00	\$27.00	\$37.00

Half Day Up Charge \$10.00 child must bring a sack lunch.

**SERVING
K - 8th**

**REGISTER
TODAY!**

WWW.IVYLEAGUEKIDS.ORG

815-464-1265



Township of Lyons



COOK COUNTY
HEALTH



Flu Shot/COVID Vaccine Drive

Saturday, December 4th, 10am-1pm
6404 Joliet Rd. Countryside, 60525

What's Being Offered?

- Flu shots, appointments **REQUIRED**
- Moderna, Pfizer, and Johnson & Johnson COVID vaccines, 1st, 2nd, and booster shots
- Pfizer COVID vaccine for 5-11 year olds
- **FREE** COVID testing

Appointments suggested for COVID vaccines,
appointments **REQUIRED** for flu shots
Walk-ins welcomed for COVID vaccines
ID **NOT** required

All are welcome, regardless of citizenship status
Mask required

To schedule an appointment, call (708) 482-8300, Option 4



FREE candy bars
for anyone under
18 who gets
vaccinated!

WILLOW SPRINGS SCHOOL DISTRICT 108

DECEMBER 2021



STUDENT LUNCH MENU





Mon

Tue

Wed

Thu

Fri

		<p>1 CORNED BEEF SANDWICH VEGETABLE FRUIT MILK</p>	<p>2 TURKEY BREAST SANDWICH VEGETABLE FRUIT GOGURT MILK</p>	<p>3 LUNCHABLE VEGETABLE FRUIT CHOCOLATE PUDDING MILK</p>
<p>6 SCHOOL IMPROVEMENT DAY EARLY STUDENT DISMISSAL</p>	<p>7 HAMBURGER ON A BUN VEGETABLE FRUIT BAKED CHIPS MILK</p>	<p>8 CHICKEN NUGGETS VEGETABLE FRUIT BREADSTICK MILK</p>	<p>9 ROAST BEEF SANDWICH WITH CHEESE VEGETABLE FRUIT MILK</p>	<p>10 CHEESE QUESADILLAS SALSA VEGETABLE FRUIT MILK</p>
<p>13 CHICKEN SANDWICH WITH CHEESE ON BREAD VEGETABLE FRUIT MILK</p>	<p>14 CHICKEN PATTIE ON A BUN VEGETABLE FRUIT JELLO CUP CHIPS MILK</p>	<p>15 SOY PEANUT BUTTER AND JELLY SANDWICH VEGETABLE FRUIT GOGURT MILK</p>	<p>16 MINI CORN DOGS VEGETABLE FRUIT MILK</p> 	<p>17 SCHOOL IMPROVEMENT DAY EARLY STUDENT DISMISSAL</p>
<p>20</p>	<p>21</p>	<p>22</p>	<p>23</p>	<p>24</p>



WINTER BREAK



ALL LUNCHES ARE SUBJECT TO CHANGE.....