



# WILLOW WEEKLY

[www.willowspringsschool.org](http://www.willowspringsschool.org)

January 21, 2022

## NEXT WEEK AT A GLANCE/PLEASE MARK YOUR CALENDAR!

IVY LEAGUE KIDS Before & Afterschool Care 630AM-6:00PM \* [www.ivyleaguekids.org](http://www.ivyleaguekids.org)

**Monday, January 24** – Girls’ Volleyball Practice 3:20-5:00pm

Access Club 3:13-4:13pm

Yearbook Club 3:13-4:13pm

**Tuesday, January 25-** Beginning Band (all members) 7:30am

Girls’ Volleyball Practice 3:20-5:00pm

Access Club 3:13-4:13pm

**Wednesday, January 26** - Concert Band (all members) 7:30am

Access Club 3:13-4:13pm

Girls’ Volleyball Practice 3:20-5:00pm

**Thursday, January 27-** Access Club 3:13-4:13pm

Girls’ Volleyball Practice 3:20-5:00pm

Theme Day- Basketball Day-Wear your favorite team gear

**Friday, January 28-** Spirit Day –Wear Blue and Gold

Girls’ Volleyball Practice 3:20-5:00pm



### Coming up:

*Monday, January 31- School Improvement Day Early Dismissal 11:30am\*\**

*Friday, February 4- 3<sup>rd</sup> Quarter Mid Term*

*Monday, February 14 - 8th Grade Argo Pre-enrollment Presentation 8:45am @ Willow/ Students Only*

*Tuesday, February 15 - 8th Grade Argo Enrollment 8:45am @ Willow/ Students Only*

*Monday, February 21 –Parent Teacher Conference/Report Card Pick Up 12:00-4:00pm and 5:00-7:30pm*

Monday, Jan 24- Roast Beef Sandwich

Tuesday, Jan 25- Beef Hot Dog

Wednesday, Jan 26- Regular Corn Dog

Thursday, Jan 27- Turkey Ham Sandwich

Friday Jan 28- Soy Peanut Butter



## Substitute Lunchroom/ Recess Monitors needed

**HELP  
WANTED  
APPLY  
WITHIN**

**Position Summary:** The Lunchroom/Recess Attendant will monitor and assist classrooms during lunch periods. This is a part-time, benefits-ineligible position. The work schedule will be: Monday - Friday, from 10:30am to 1:30pm.

### Principal Duties And Responsibilities

- Provide supervision of students during lunch periods in the cafeteria and recess
- Monitors student behavior in assigned areas to ensure compliance with school rules and procedures.
- Manages misconduct by students in tactful and diplomatic manner.
- Must be able to lift 30lbs plus Other duties as assigned

**How to apply:** Call Mrs. Wacker to schedule an appointment to fill out an application 708-839-6828

January 21, 2022

Message  
From the  
Superintendent

Dear Willow Springs Community,

For the past five months I have enjoyed working with the students, staff, and families of the Willow Springs school community. Even though the current challenging times, I have observed the dedication, care, and concern of the Willow Springs community as it relates to the education of our students.

During these past few months I have developed a strong desire to remain in WS 108. With that said, I am thrilled to share that the Willow Springs Board of Education officially approved a new contract for me to remain as superintendent beyond the current school year. I am truly grateful for this opportunity and honored to have been selected. I am very excited about the future in WS 108 and look forward to redefining the Willow Way with all of you.

I would like to thank the students, staff, and community for welcoming me over the past few months and sharing the great history of your school and community. The road ahead will most certainly be challenging for a while, but I am eager to begin building the future of our district with all of you.

Sincerely,



Steve Bahn



## Custodians Needed!



Please come to the office from 10:00-2:00pm to fill out an application with Mrs. Wacker.

- **Lunch Custodian Position Summary:** The custodian will assist during lunch periods/transitions. Must be able to lift 30lbs. This is a part-time, benefits-ineligible position. The work schedule will be: Monday-Friday 10:00am-3:00pm. The pay is \$12.00 per hour.
- **Substitute Custodian Position Summary:** The custodian will be a substitute custodian. Must be able to lift 30lbs. This is a part-time, benefits-ineligible position. The work schedule will be only as needed. The pay is \$12.00 per hour.

**WILLOW SPRINGS LIONESSE LION CLUB  
SCHOLARSHIP**

**SELECTIONS WILL BE BASED ON:**

- A- Current resident of Willow Springs, Illinois for at least one year.
- B- Applicants must have at least a 3.0 cumulative grade point average in a 4.0 system. A legible transcript must be included with application.
- C- Must be currently enrolled or accepted to an accredited college, university, or community college, as a full time student. (12 semester hours or more)
- D- Must show interest in outside academic activities (EX- school/community clubs, office held, awards etc)
- E- Financial need/academic performance
- F- Applications should be sent to  
Lioness Lion Cindy Layer  
clayer@willowspringsschool.org

**\*\* All Applications are due by Friday, February 18, 2022\*\***

All applicants will be notified when selection is completed.

WILLOW SPRINGS LIONESS LIONS CLUB  
SCHOLARSHIP APPLICATION

TO THE APPLICANT: THIS APPLICATION MUST BE TYPED OR PRINTED AND RETURNED NO LATER THAN ***FEBRUARY 18, 2022***. NO ACTION WILL BE TAKEN ON APPLICATIONS RECEIVED AFTER THIS DATE. THIS INFORMATION IS TO BE USED BY THE SCHOLARSHIP COMMITTEE AND AS SUCH IT IS CONSIDERED CONFIDENTIAL.

1. Name \_\_\_\_\_ Gender \_\_\_\_\_ Birthdate \_\_\_\_\_
2. Home Address \_\_\_\_\_
3. How long have you resided at this address? \_\_\_\_\_
4. Telephone number \_\_\_\_\_ Cell phone number \_\_\_\_\_
5. Father's Name \_\_\_\_\_ Father's Occupation \_\_\_\_\_
6. Father's Employer \_\_\_\_\_
7. How long employed there? \_\_\_\_\_ Full or part time? \_\_\_\_\_
8. Mother's Name \_\_\_\_\_ Mother's occupation \_\_\_\_\_
9. Mother's employer \_\_\_\_\_ How long there? \_\_\_\_\_
10. Full or part time? \_\_\_\_\_
11. Number of dependent children in family? Brothers \_\_\_\_\_ Ages \_\_\_\_\_  
Sisters \_\_\_\_\_ Ages \_\_\_\_\_
12. What School do you attend? \_\_\_\_\_
13. What is your cumulative GPA? \_\_\_\_\_ in a \_\_\_\_\_ point system.
14. List the extra-curricular activities in which you have participated while in high school including offices held and number of years participated.  
\_\_\_\_\_  
\_\_\_\_\_
15. If currently attending college, list the extra-curricular activities in which you have participated including offices held and number of years participated.  
\_\_\_\_\_  
\_\_\_\_\_

16. In what clubs or activities (not directly connected with school) have you participated?  
\_\_\_\_\_
17. What awards/honors have you received? \_\_\_\_\_
18. What college do you plan to attend? \_\_\_\_\_ Major \_\_\_\_\_
19. Will you be attending full time (12 semester hours or more)? \_\_\_\_\_
20. Have you applied? \_\_\_\_\_ Have you been accepted? \_\_\_\_\_
21. How much will it cost to attend this school for one year? \_\_\_\_\_  
Tuition \_\_\_\_\_ Room and Board \_\_\_\_\_ Fees(books etc) \_\_\_\_\_
22. How much contribution do you expect from your parents? \_\_\_\_\_  
From self? \_\_\_\_\_
23. What part time or full time jobs have you had in the past two years? \_\_\_\_\_ How many hours did you work? \_\_\_\_\_
24. Are you currently employed? \_\_\_\_\_ If so where? \_\_\_\_\_  
How many hours do you currently work? \_\_\_\_\_
25. Will you accept work-study aid in college? \_\_\_\_\_
26. Do you plan to work this summer? \_\_\_\_\_ Where? \_\_\_\_\_
27. Please explain your qualifications for a scholarship and your financial needs:  
\_\_\_\_\_
28. List any scholarships, grants or loans you have applied for and/or been awarded and their value \_\_\_\_\_
29. List the number of persons in your immediate family that will be attending college or vocational school next year. \_\_\_\_\_
30. On a separate piece of paper, write 150-200 words on why you wish to continue your education and explain your career plans.

**\*\*PLEASE ATTACH ESSAY AND GRADE TRANSCRIPTS TO THIS FORM AND RETURN TO: Cindy Layer, Willow Springs Lioness Lion Scholarship CO-Chairperson, email [clayer@willowsschool.org](mailto:clayer@willowsschool.org)**

Signature of Applicant \_\_\_\_\_ Date \_\_\_\_\_

# WINTER WEATHER

A friendly reminder to parents to bundle up their student(s) for school

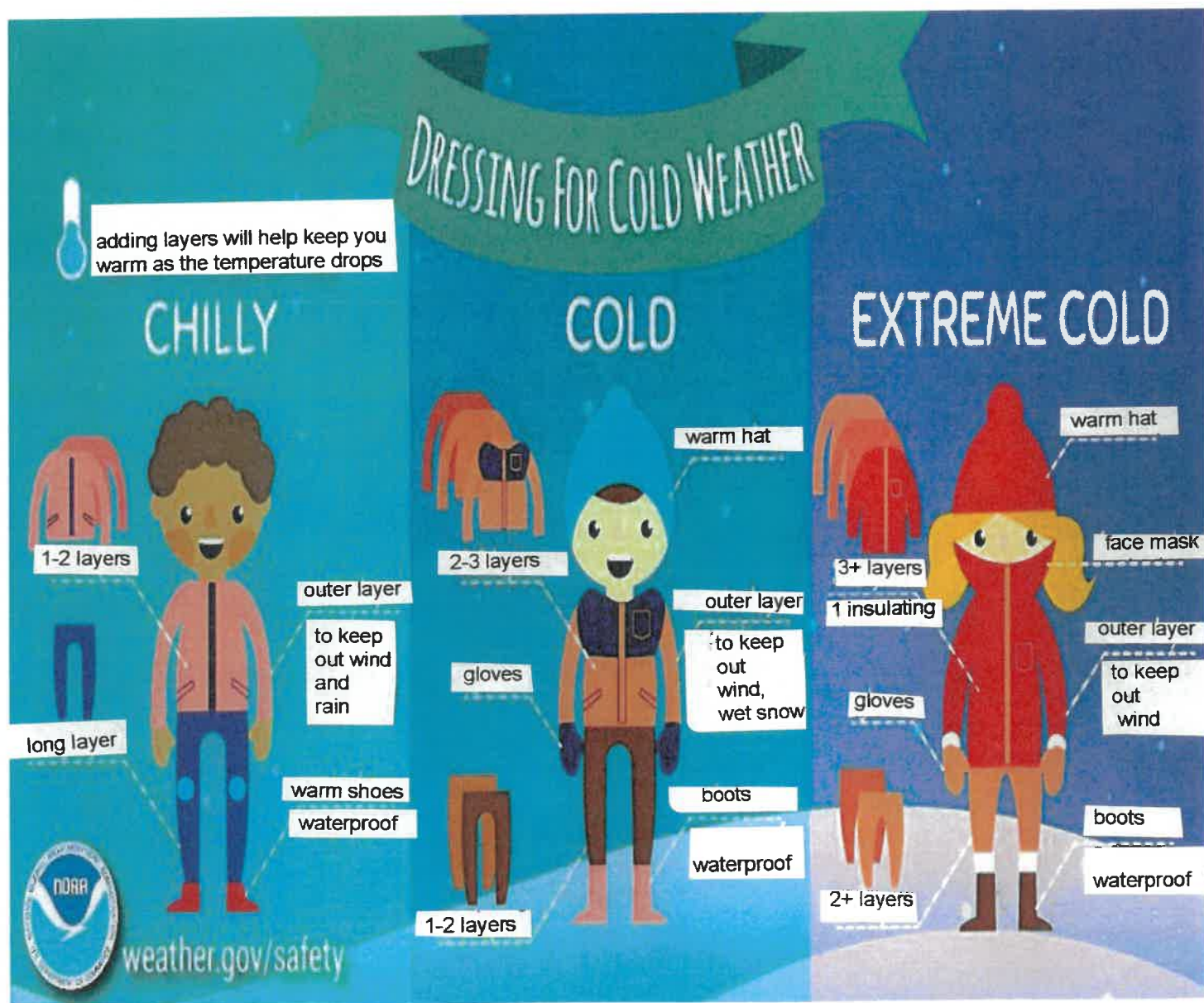
## 8:10am Morning Supervision, Is it indoor or outdoor?

**Indoors:** The temperature is 19 degrees or lower or its raining. K-8 Students will walk directly to their class starting at 8:10am

**Outdoors:** The temperature is 20 degrees and above. All K-8 students will remain outside until the bell rings.

**Recess:** The temperature is 20 degrees and above. Students will go outdoors for recess/ mask breaks

Staff supervision begins at 8:10am. Do **NOT** leave your child unattended prior to that time. If you are in need of child care, please call Ivy League Kids at (815) 464-1265 or visit the web page at: <https://ivyleaguekids.org/>



# WILLOW SPRINGS SCHOOL DISTRICT 108

## JANUARY 2022



# STUDENT LUNCH MENU



**Mon**

**Tue**

**Wed**

**Thu**

**Fri**

Mon	Tue	Wed	Thu	Fri
3	4	5	6	7
<b>CHICKEN NUGGETS</b> <b>VEGETABLE</b> <b>FRUIT</b> <b>BREADSTICK</b> <b>MILK</b>	<b>CORNED BEEF SANDWICH</b> <b>VEGETABLE</b> <b>FRUIT</b> <b>MILK</b>	<b>BEEF HOT DOG ON A BUN</b> <b>KETCHUP</b> <b>VEGETABLE FRUIT</b> <b>CHIPS MILK</b>	<b>TURKEY BREAST SANDWICH WITH CHEESE</b> <b>VEGETABLE</b> <b>FRUIT GOGURT</b> <b>MILK</b>	<b>BOSCO STICKS</b> <b>MARINARA SAUCE</b> <b>VEGETABLE</b> <b>FRUIT</b> <b>MILK</b>
10	11	12	13	14
<b>HAMBURGER ON A BUN</b> <b>KETCHUP</b> <b>VEGETABLE FRUIT</b> <b>CHIPS MILK</b>	<b>ROAST BEEF SANDWICH ON BREAD WITH CHEESE</b> <b>VEGETABLE</b> <b>FRUIT MILK</b>	<b>BEEF AND BEAN BURRITO</b> <b>SALSA</b> <b>VEGETABLE</b> <b>FRUIT MILK</b>	<b>CORNED BEEF SANDWICH</b> <b>VEGETABLE</b> <b>FRUIT</b> <b>CHIPS MILK</b>	<b>CHICKEN PATTIE ON A BUN</b> <b>BBQ SAUCE</b> <b>VEGETABLE</b> <b>FRUIT MILK</b>
17	18	19	20	21
<b>MARTIN LUTHER KING'S DAY</b> <b>NO STUDENT ATTENDANCE</b>	<b>TURKEY SANDWICH</b> <b>VEGETABLE</b> <b>FRUIT</b> <b>JELLO</b> <b>MILK</b>	<b>CHICKEN LUNCH MEAT SANDWICH</b> <b>VEGETABLE</b> <b>FRUIT CHIPS</b> <b>MILK</b>	<b>MINI CORN DOGS</b> <b>VEGETABLE</b> <b>FRUIT</b> <b>MILK</b>	<b>PIZZA LUCHABLE</b> <b>VEGETABLE</b> <b>FRUIT</b> <b>PUDDING CUP</b> <b>MILK</b>
24	25	26	27	28
<b>ROAST BEEF SANDWICH ON BREAD</b> <b>VEGETABLE</b> <b>FRUIT</b> <b>MILK</b>	<b>BEEF HOT DOG ON A BUN</b> <b>VEGETABLE</b> <b>FRUIT</b> <b>CHIPS MILK</b>	<b>REGULAR CORN DOG</b> <b>MUSTARD</b> <b>VEGETABLE</b> <b>FRUIT MILK</b>	<b>TURKEY HAM SANDWICH</b> <b>VEGETABLE</b> <b>FRUIT</b> <b>MILK</b>	<b>SOY PEANUT BUTTER AND JELLY SANDWICH</b> <b>VEGETABLE</b> <b>FRUIT</b> <b>PUDDING MILK</b>
31		<b>ALL LUNCHES ARE SUBJECT TO CHANGE.....</b>		
<b>SCHOOL IMPROVEMENT DAY</b> <b>EARLY STUDENT DISMISSAL</b>				

# Willow Springs School District #108

## 2021-2022 School Calendar

July						
Sun	Mon	Tues	Wed	Thurs	Fri	Sat
					1	2
3	4	5	6	7	8	9
10	11	12	13	14	15	16
17	18	19	20	21	22	23
24	25	26	27	28	29	30
31						

August						
Sun	Mon	Tues	Wed	Thurs	Fri	Sat
1	2	3	4	5	6	7
8	9	10	11	12	13	14
15	16	17	18	19	20	21
22	23	24	25	26	27	28
29	30	31				

September						
Sun	Mon	Tues	Wed	Thurs	Fri	Sat
			1	2	3	4
5	6	7	8	9	10	11
12	13	14	15	16	17	18
19	20	21	22	23	24	25
26	27	28	29	30		

October						
Sun	Mon	Tues	Wed	Thurs	Fri	Sat
					1	2
3	4	5	6	7	8	9
10	11	12	13	14	15	16
17	18	19	20	21	22	23
24	25	26	27	28	29	30
31						

November						
Sun	Mon	Tues	Wed	Thurs	Fri	Sat
	1	2	3	4	5	6
7	8	9	10	11	12	13
14	15	16	17	18	19	20
21	22	23	24	25	26	27
28	29	30				

December						
Sun	Mon	Tues	Wed	Thurs	Fri	Sat
			1	2	3	4
5	6	7	8	9	10	11
12	13	14	15	16	17	18
19	20	21	22	23	24	25
26	27	28	29	30	31	

January						
Sun	Mon	Tues	Wed	Thurs	Fri	Sat
						1
2	3	4	5	6	7	8
9	10	11	12	13	14	15
16	17	18	19	20	21	22
23	24	25	26	27	28	29
30	31					

February						
Sun	Mon	Tues	Wed	Thurs	Fri	Sat
		1	2	3	4	5
6	7	8	9	10	11	12
13	14	15	16	17	18	19
20	21	22	23	24	25	26
27	28					

March						
Sun	Mon	Tues	Wed	Thurs	Fri	Sat
		1	2	3	4	5
6	7	8	9	10	11	12
13	14	15	16	17	18	19
20	21	22	23	24	25	26
27	28	29	30	31		

April						
Sun	Mon	Tues	Wed	Thurs	Fri	Sat
					1	2
3	4	5	6	7	8	9
10	11	12	13	14	15	16
17	18	19	20	21	22	23
24	25	26	27	28	29	30

May						
Sun	Mon	Tues	Wed	Thurs	Fri	Sat
1	2	3	4	5	6	7
8	9	10	11	12	13	14
15	16	17	18	19	20	21
22	23	24	25	26	27	28
29	30	31				

June						
Sun	Mon	Tues	Wed	Thurs	Fri	Sat
			1	2	3	4
5	6	7	8	9	10	11
12	13	14	15	16	17	18
19	20	21	22	23	24	25
26	27	28	29	30		

- No School
- Early Dismissal 11:30
- Early Dismissal 1:30
- Parent Teacher Conference

- Midterm Reports Go Home
- Report Card Go Home
- First Day of School
- Last Day of School