



WILLOW WEEKLY

www.willowsschool.org

January 28, 2022

NEXT WEEK AT A GLANCE/PLEASE MARK YOUR CALENDAR!

IVY LEAGUE KIDS Before & Afterschool Care 630AM-6:00PM * www.ivyleaguekids.org

Monday, January 31 – Concert Band (Woodwinds) 7:30am

School Improvement Day Early Dismissal 11:30am

Tuesday, February 1- Beginning Band (all members) 7:30am

Girls' Volleyball vs Pleasantdale-HOME

Access Club 3:13-4:13pm

Yearbook Club 3:13-4:13pm

Wednesday, February 2 - Concert Band (Brass/Percussion) 7:30am

Access Club 3:13-4:13pm

Girls' Volleyball Practice 3:20-5:00pm

4th Grade Art Club 3:13-4:13pm

Thursday, February 3 - Beginning Band (all members) 7:30am

Access Club 3:13-4:13pm

5th Grade Art Club 3:13-4:13pm

Girls' Volleyball vs Highlands

Theme Day- Tye Dye Day

Friday, February 4 - Concert Band (all members) 7:30am

3rd Quarter Mid Term

Spirit Day –Wear Blue and Gold

Girls' Volleyball Practice 3:20-5:00pm



Coming up:

Monday, February 14 - 8th Grade Argo Pre-enrollment Presentation 8:45am @ Willow/ Students Only

Tuesday, February 15 - 8th Grade Argo Enrollment 8:45am @ Willow/ Students Only

Monday, February 21 –Parent Teacher Conference/Report Card Pick Up 12:00-4:00pm and 5:00-7:30pm

Parent/Guardians will have the option to choose In Person or a Zoom

Conference. Please be on the lookout for more information the 1st week of

February, You will receive an email from your student's homeroom teacher with

a link to sign up for the conference.

Monday, March 7- Casimir Pulaski Day No School

Monday, March 28-First day of Spring Break

Monday, April 4- Classes Resume

Monday, Jan 31- Early Dismissal-No Lunch

Tuesday, Feb 1- Corned Beef Sandwich

Wednesday, Feb 2- Beef Hot Dog

Thursday, Feb 3- Turkey Breast

Friday Feb 4- Cheese Hot Pocket

**FREE
Breakfast
& Lunch**



WILLOW SPRINGS PUBLIC SCHOOL

DISTRICT 108 • COOK COUNTY

SUPERINTENDENT • STEVE BAHN
PRINCIPAL • ALEXANDRA ORELUK

8345 ARCHER AVENUE
WILLOW SPRINGS, ILLINOIS 60480-1499
PHONE (708) 839-6828 • FAX (708) 839-8399
www.willowsschool.org



The Eye Glasses Clinic has been cancelled for January 28th due to lack of staff. The clinic has placed us on a waiting list and will let me know ASAP when an opening becomes available. Please let me know if you have any questions.

Lisa Perea MSN, RN, IL PEL-SN, NCSN
lperea@willowsschool.org
708-467-3511



WILLOW SPRINGS SCHOOL, WHERE A LOVE OF LEARNING GROWS.

WINTER WEATHER

A friendly reminder to parents to bundle up their student(s) for school

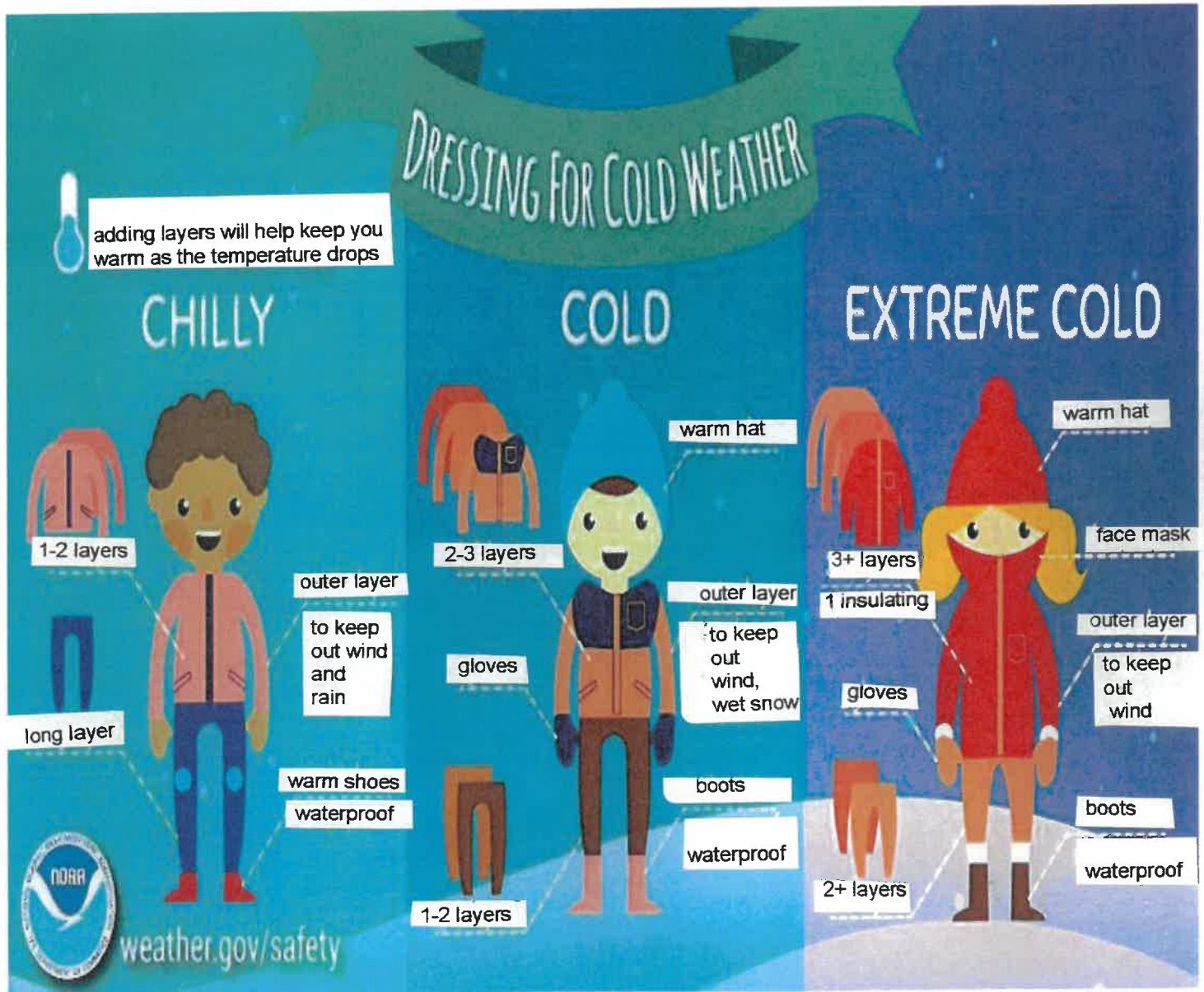
8:10am Morning Supervision, Is it indoor or outdoor?

Indoors: The temperature is 19 degrees or lower or its raining. K-8 Students will walk directly to their class starting at 8:10am

Outdoors: The temperature is 20 degrees and above. All K-8 students will remain outside until the bell rings.

Recess: The temperature is 20 degrees and above. Students will go outdoors for recess/ mask breaks

Staff supervision begins at 8:10am. Do **NOT** leave your child unattended prior to that time. If you are in need of child care, please call Ivy League Kids at (815) 464-1265 or visit the web page at: <https://ivyleaguekids.org/>



**WILLOW SPRINGS LIONESS LION CLUB
SCHOLARSHIP**

SELECTIONS WILL BE BASED ON:

- A- Current resident of Willow Springs, Illinois for at least one year.
- B- Applicants must have at least a 3.0 cumulative grade point average in a 4.0 system. A legible transcript must be included with application.
- C- Must be currently enrolled or accepted to an accredited college, university, or community college, as a full time student. (12 semester hours or more)
- D- Must show interest in outside academic activities (EX- school/community clubs, office held, awards etc)
- E- Financial need/academic performance
- F- Applications should be sent to
Lioness Lion Cindy Layer
clayer@willowspringsschool.org

**** All Applications are due by Friday, February 18, 2022****

All applicants will be notified when selection is completed.

WILLOW SPRINGS LIONESS LIONS CLUB
SCHOLARSHIP APPLICATION

TO THE APPLICANT: THIS APPLICATION MUST BE TYPED OR PRINTED AND RETURNED NO LATER THAN ***FEBRUARY 18, 2022***. NO ACTION WILL BE TAKEN ON APPLICATIONS RECEIVED AFTER THIS DATE. THIS INFORMATION IS TO BE USED BY THE SCHOLARSHIP COMMITTEE AND AS SUCH IT IS CONSIDERED CONFIDENTIAL.

1. Name _____ Gender _____ Birthdate _____
2. Home Address _____
3. How long have you resided at this address? _____
4. Telephone number _____ Cell phone number _____
5. Father's Name _____ Father's Occupation _____
6. Father's Employer _____
7. How long employed there? _____ Full or part time? _____
8. Mother's Name _____ Mother's occupation _____
9. Mother's employer _____ How long there? _____
10. Full or part time? _____
11. Number of dependent children in family? Brothers _____ Ages _____
Sisters _____ Ages _____
12. What School do you attend? _____
13. What is your cumulative GPA? _____ in a _____ point system.
14. List the extra-curricular activities in which you have participated while in high school including offices held and number of years participated.

15. If currently attending college, list the extra-curricular activities in which you have participated including offices held and number of years participated.

16. In what clubs or activities (not directly connected with school) have you participated?

17. What awards/honors have you received? _____
18. What college do you plan to attend? _____ Major _____
19. Will you be attending full time (12 semester hours or more)? _____
20. Have you applied? _____ Have you been accepted? _____
21. How much will it cost to attend this school for one year? _____
Tuition _____ Room and Board _____ Fees(books etc) _____
22. How much contribution do you expect from your parents? _____
From self? _____
23. What part time or full time jobs have you had in the past two years? _____ How many hours did you work? _____
24. Are you currently employed? _____ If so where? _____
How many hours do you currently work? _____
25. Will you accept work-study aid in college? _____
26. Do you plan to work this summer? _____ Where? _____
27. Please explain your qualifications for a scholarship and your financial needs:

28. List any scholarships, grants or loans you have applied for and/or been awarded and their value _____
29. List the number of persons in your immediate family that will be attending college or vocational school next year. _____
30. On a separate piece of paper, write 150-200 words on why you wish to continue your education and explain your career plans.

****PLEASE ATTACH ESSAY AND GRADE TRANSCRIPTS TO THIS FORM AND RETURN TO: Cindy Layer, Willow Springs Lioness Lion Scholarship CO-Chairperson, email clayer@willowsschool.org**

Signature of Applicant _____ Date _____

WILLOW SPRINGS SCHOOL DISTRICT 108

JANUARY 2022



STUDENT LUNCH MENU



Mon

Tue

Wed

Thu

Fri

Mon	Tue	Wed	Thu	Fri
3	4	5	6	7
CHICKEN NUGGETS VEGETABLE FRUIT BREADSTICK MILK	CORNED BEEF SANDWICH VEGETABLE FRUIT MILK	BEEF HOT DOG ON A BUN KETCHUP VEGETABLE FRUIT CHIPS MILK	TURKEY BREAD SANDWICH WITH CHEESE VEGETABLE FRUIT GOGURT MILK	BOSCO STICKS MARINARA SAUCE VEGETABLE FRUIT MILK
10	11	12	13	14
HAMBURGER ON A BUN KETCHUP VEGETABLE FRUIT CHIPS MILK	ROAST BEEF SANDWICH ON BREAD WITH CHEESE VEGETABLE FRUIT MILK	BEEF AND BEAN BURRITO SALSA VEGETABLE FRUIT MILK	CORNED BEEF SANDWICH VEGETABLE FRUIT CHIPS MILK	CHICKEN PATTIE ON A BUN BBQ SAUCE VEGETABLE FRUIT MILK
17	18	19	20	21
MARTIN LUTHER KING'S DAY NO STUDENT ATTENDANCE	TURKEY SANDWICH VEGETABLE FRUIT JELLO MILK	CHICKEN LUNCH MEAT SANDWICH VEGETABLE FRUIT CHIPS MILK	MINI CORN DOGS VEGETABLE FRUIT MILK	PIZZA LUCHABLE VEGETABLE FRUIT PUDDING CUP MILK
24	25	26	27	28
ROAST BEEF SANDWICH ON BREAD VEGETABLE FRUIT MILK	BEEF HOT DOG ON A BUN VEGETABLE FRUIT CHIPS MILK	REGULAR CORN DOG MUSTARD VEGETABLE FRUIT MILK	TURKEY HAM SANDWICH VEGETABLE FRUIT MILK	SOY PEANUT BUTTER AND JELLY SANDWICH VEGETABLE FRUIT PUDDING MILK
31		ALL LUNCHES ARE SUBJECT TO CHANGE.....		
SCHOOL IMPROVEMENT DAY EARLY STUDENT DISMISSAL				

WILLOW SPRINGS SCHOOL DISTRICT 108

FEBRUARY 2022



STUDENT LUNCH MENU








Mon

Tue

Wed

Thu

Fri

	1	2	3	4
	1 CORNED BEEF SANDWICH VEGETABLE FRUIT MILK	2 BEEF HOT DOG ON A BUN KETCHUP VEGETABLE FRUIT CHIPS MILK 	3 TURKEY BREAST SANDWICH WITH CHEESE VEGETABLE FRUIT CHIPS MILK	4 CHEESE HOT POCKET VEGETABLE FRUIT MILK
7 HAMBURGER ON A BUN KETCHUP VEGETABLE FRUIT MILK	8 CHICKEN LUNCH-MEAT SANDWICH VEGETABLE FRUIT CHIPS MILK	9 CHICKEN PATTIE ON A BUN BBQ SAUCE VEGETABLE FRUIT MILK	10 ROAST BEEF SANDWICH WITH CHEESE VEGETABLE FRUIT MILK	11 BEEF AND BEAN BURRITO SALSA VEGETABLE FRUIT MILK
14 TURKEY HAM SANDWICH  VEGETABLE FRUIT PUDDING CUP MILK	15 MINI CORN DOGS VEGETABLE FRUIT CHIPS MILK	16 HOT DOG ON A BUN KETCHUP VEGETABLE FRUIT MILK	17 CHICKEN NOODLE SOUP CRACKERS SALAD FRUIT MILK	18 TURKEY SANDWICH SALAD FRUIT CHIPS MILK
21 PARENT/TEACHER CONFERENCES NO STUDENT ATTENDANCE 	22 CHICKEN NUGGETS KETCHUP VEGETABLE FRUIT BREADSTICK MILK	23 CORNED BEEF SANDWICH MUSTARD VEGETABLE FRUIT MILK	24 PANCAKE MINI TURKEY WRAPS (MAPLE) APPLESAUCE VEGETABLE MILK	25 TURKEY SANDWICH WITH CHEESE VEGETABLE FRUIT MILK
28 HAMBURGER ON A BUN KETCHUP VEGETABLE FRUIT CHIPS MILK		ALL LUNCHES ARE SUBJECT TO CHANGE.....		

Willow Springs School District #108

2021-2022 School Calendar

July						
Sun	Mon	Tues	Wed	Thurs	Fri	Sat
					1	2
3	4	5	6	7	8	9
10	11	12	13	14	15	16
17	18	19	20	21	22	23
24	25	26	27	28	29	30
31						

August						
Sun	Mon	Tues	Wed	Thurs	Fri	Sat
1	2	3	4	5	6	7
8	9	10	11	12	13	14
15	16	17	18	19	20	21
22	23	24	25	26	27	28
29	30	31				

September						
Sun	Mon	Tues	Wed	Thurs	Fri	Sat
			1	2	3	4
5	6	7	8	9	10	11
12	13	14	15	16	17	18
19	20	21	22	23	24	25
26	27	28	29	30		

October						
Sun	Mon	Tues	Wed	Thurs	Fri	Sat
					1	2
3	4	5	6	7	8	9
10	11	12	13	14	15	16
17	18	19	20	21	22	23
24	25	26	27	28	29	30
31						

November						
Sun	Mon	Tues	Wed	Thurs	Fri	Sat
	1	2	3	4	5	6
7	8	9	10	11	12	13
14	15	16	17	18	19	20
21	22	23	24	25	26	27
28	29	30				

December						
Sun	Mon	Tues	Wed	Thurs	Fri	Sat
			1	2	3	4
5	6	7	8	9	10	11
12	13	14	15	16	17	18
19	20	21	22	23	24	25
26	27	28	29	30	31	

January						
Sun	Mon	Tues	Wed	Thurs	Fri	Sat
						1
2	3	4	5	6	7	8
9	10	11	12	13	14	15
16	17	18	19	20	21	22
23	24	25	26	27	28	29
30	31					

February						
Sun	Mon	Tues	Wed	Thurs	Fri	Sat
		1	2	3	4	5
6	7	8	9	10	11	12
13	14	15	16	17	18	19
20	21	22	23	24	25	26
27	28					

March						
Sun	Mon	Tues	Wed	Thurs	Fri	Sat
		1	2	3	4	5
6	7	8	9	10	11	12
13	14	15	16	17	18	19
20	21	22	23	24	25	26
27	28	29	30	31		

April						
Sun	Mon	Tues	Wed	Thurs	Fri	Sat
					1	2
3	4	5	6	7	8	9
10	11	12	13	14	15	16
17	18	19	20	21	22	23
24	25	26	27	28	29	30

May						
Sun	Mon	Tues	Wed	Thurs	Fri	Sat
1	2	3	4	5	6	7
8	9	10	11	12	13	14
15	16	17	18	19	20	21
22	23	24	25	26	27	28
29	30	31				

June						
Sun	Mon	Tues	Wed	Thurs	Fri	Sat
			1	2	3	4
5	6	7	8	9	10	11
12	13	14	15	16	17	18
19	20	21	22	23	24	25
26	27	28	29	30		

- No School
- Early Dismissal 11:30
- Early Dismissal 1:30
- Parent Teacher Conference

- Midterm Reports Go Home
- Report Card Go Home
- First Day of School
- Last Day of School