



# WILLOW WEEKLY

[www.willowsschool.org](http://www.willowsschool.org)

Jan 7, 2022

## NEXT WEEK AT A GLANCE/PLEASE MARK YOUR CALENDAR!

IVY LEAGUE KIDS Before & Afterschool Care 630AM-6:00PM \* [www.ivyleaguekids.org](http://www.ivyleaguekids.org)

**Monday, January 10** – Concert Band (Woodwinds) 7:30am

Yearbook Club 3:13-4:13pm

Access Club 3:13-4:13pm

Junior High Cheer Practice 3:30-5:00pm

Boys Basketball Practice 3:30-5:00pm

**Tuesday, January 11-** Beginning Band (all members) 7:30am

Junior High Cheer Practice 3:30-5:00pm

Boys Basketball vs Pleasantdale-HOME

**Wednesday, January 12** - Concert Band (Bass/Percussion) 7:30am

Access Club 3:13-4:13pm

Boys Basketball Practice

**Thursday, January 13-** Beginning Band (all members) 7:30am

Access Club 3:13-4:13pm

**FIRST**- Girls' Volleyball Practice 3:20-5:00pm

Theme Day-Workout Gear

Boys Basketball vs Gurrie-AWAY



**Friday, January 14-** Concert Band (All members) 7:30am

Spirit Day –Wear Blue and Gold

2<sup>nd</sup> Quarter Report Cards go home with students

Girls' Volleyball 3:20-5:00pm

8th Grade Boys Basketball vs Staff \*no spectators\*

### Coming up:

*Monday, January 17- Dr. Martin Luther King Day No School*

*Wednesday, January 19- 8<sup>th</sup> Grade Picture Retake Day / 8<sup>th</sup> grade Parent Night at Argo*

*Monday, January 31- School Improvement Day Early Dismissal 1130am\*\**

Monday, Jan 10-Hamburger

Tuesday, Jan 11- Roast Beef

Wednesday, Jan 12- Beef and Bean Burrito

Thursday, Jan 13- Corned Beef Sandwich

Friday Jan 14- Chicken Pattie





# Custodians Needed!



Please come to the office from 10:00-2:00pm to fill out an application with Mrs.Wacker.

- **Lunch Custodian Position Summary:** The custodian will assist during lunch periods/transitions. Must be able to lift 30lbs. This is a part-time, benefits-ineligible position. The work schedule will be: Monday-Friday 10:00am-3:00pm. The pay is \$12.00 per hour.
- **Substitute Custodian Position Summary:** The custodian will be a substitute custodian. Must be able to lift 30lbs. This is a part-time, benefits-ineligible position. The work schedule will be only as needed. The pay is \$12.00 per hour.



## JOIN OUR VOLLEYBALL TEAM

Junior High Girls' will start volleyball practice on Thursday, January 13<sup>th</sup>. Practice will be Monday-Friday 3:30-5:00pm. Informational packets went home with students. If you did not receive a packet please email Coach Noble at: [inoble@willowspringsschool.org](mailto:inoble@willowspringsschool.org) or Coach Dondlinger at: [jdondlin@willowspringsschool.org](mailto:jdondlin@willowspringsschool.org)

# ***ARGO 8th Grade***

**Family Night**

---

**January 19, 2022**

**7:15 PM**

**Willow Springs School  
Families Arrive in the  
Performing Art Center**

---

**7:20 PM**

**Registration Process  
Explanation for Willow  
Springs School families**

---

**7:55 PM**

**Willow Springs School  
families: Visit Classrooms  
and Extracurricular Fair**

---

**Please enter through the Portillo's  
Performing Arts Center, in the back lot.  
We look forward to meeting our Willow  
Springs School families.**

# WINTER WEATHER

A friendly reminder to parents to bundle up their student(s) for school

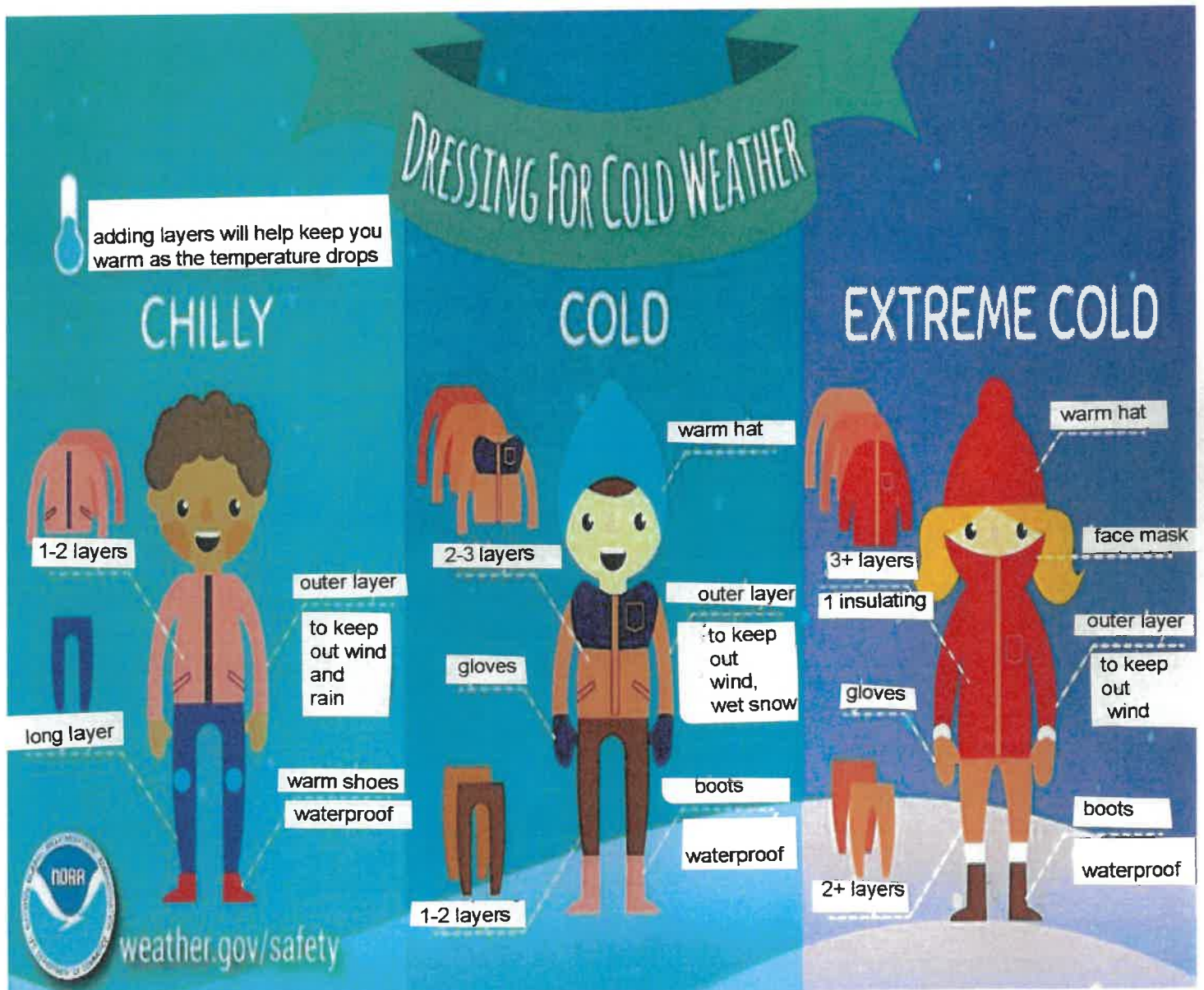
## 8:10am Morning Supervision, Is it indoor or outdoor?

**Indoors:** The temperature is 19 degrees or lower or its raining. K-8 Students will walk directly to their class starting at 8:10am

**Outdoors:** The temperature is 20 degrees and above. All K-8 students will remain outside until the bell rings.

**Recess:** The temperature is 20 degrees and above. Students will go outdoors for recess/ mask breaks

Staff supervision begins at 8:10am. Do NOT leave your child unattended prior to that time. If you are in need of child care, please call Ivy League Kids at (815) 464-1265 or visit the web page at: <https://ivyleaguekids.org/>





**Flexible  
Scheduling  
Available!**



**Ivy League Kids**

# BEFORE & AFTER SCHOOL

**Willow Springs School District 108**

**Willow Springs School**

## HOURS

**6:30am** until school starts.

After school until **6:00pm**.



A rewarding program that  
balances each child's  
intellectual, physical, social,  
creative & emotional needs.

## ACTIVITIES

- 🍀 **Sports & Recreation**
- 🍀 **Arts & Crafts**
- 🍀 **STEM Education**
- 🍀 **Homework Help**
- 🍀 **Character Building**
- 🍀 **Much More!**

Accepts Illinois Action for  
Children Child Care  
Assistance Program.

**REGISTRATION FEE IS \$40 • Convenient & Affordable!**

Fee Schedule	AM Only	PM Only	AM&PM
Attend 5 DAYS	\$78.00	\$83.00	\$124.00
Attend 4 DAYS	\$66.00	\$71.00	\$105.00
Attend 3 DAYS	\$51.00	\$55.00	\$82.00
Attend 2 DAYS	\$36.00	\$41.00	\$60.00
Attend 1 DAY	\$20.00	\$21.00	\$32.00
Drop Off	\$26.00	\$27.00	\$37.00

Half Day Up Charge \$10.00 child must bring a sack lunch.

**SERVING  
K - 8th**

**REGISTER  
TODAY!**

**WWW.IVYLEAGUEKIDS.ORG**

**815-464-1265**



# TeacherEase

Welcome to Willow Springs School online student information database, **Teacherease**. Here as parents, you have access to your student's(s'):

- Registration information (for edit and updating contact info)
- Grades
- Attendance
- School meal tracking and billing
- Discipline reports
- Current grades in his or her classes, missing assignments

We hope you will follow the instructions below and begin the important task of keeping track of your student's grades, attendance, school communications and school fees throughout the year.

**Login to your account**

Email Address

Password

Remember email [Forgot password?](#)

Log In

OR

Log In with Google

Don't have an account? [Sign Up](#)

1. Go to the App store and search : TeacherEase
2. It is free to download. Click GET
3. Type in your email address and password (this will be sent to your e-mail address) If you do not have a password please call Ms.Flores at 708-839- 6828 or email at [cflores@willowspringsschool.org](mailto:cflores@willowspringsschool.org) . A link will be sent to your email address on file.

Please **OPT IN** to stay up to date on important messages or calls from Willow Springs School.

Remember to choose your preferred method of contact. You can choose phone calls, email, text messaging or chose all of them. Our automated number is **1-833-712-2713**

**\*\*Please add this phone number to your mobile phone as NOT SCAM OR SCAM LIKELY**

**TeacherEase**  
Software for Standards-based Learning

**Notification Settings**

Can TeacherEase send me notifications?:

Do not send notifications between:  
09:00 PM - 07:00 AM

Automatically notify me about:

Grade Updates

Mobile App

Email

Feed




New Assignments

Non-Present Attendance

Menus subject to  
change without  
notice.

# BREAKFAST JANUARY 2022

Full Breakfast \$1.60  
Extra Entrée \$0.75

SUNDAY	MONDAY	TUESDAY	WEDNESDAY	THURSDAY	FRIDAY	SATURDAY
	<b>HAPPY NEW YEAR</b>					1
2	3 *Froot Loops Kit Milk Juice Pinnacle Cup	4 *Golden Graham Kit Milk Juice Mandarin Orange Cup	5 *Multigrain Cheerios kit Milk Juice Pear Cup	6 *Cinn. Toast Crunch Kit Milk Juice Mix Fruit Cup	7 Cocoa Puffs Milk Juice Peach Cup	8
9	10 *Froot Loops Kit Milk Juice Pinnacle Cup	11 *Golden Graham Kit Milk Juice Mandarin Orange Cup	12 *Multigrain Cheerios kit Milk Juice Pear Cup	13 *Cinn. Toast Crunch Kit Milk Juice Mix Fruit Cup	14 Cocoa Puffs Milk Juice Peach Cup	15
16	17 No School Martin Luther King's Day	18 *Golden Graham Kit Milk Juice Mandarin Orange Cup	19 *Multigrain Cheerios kit Milk Juice Pear Cup	20 *Cinn. Toast Crunch Kit Milk Juice Mix Fruit Cup	21 Cocoa Puffs Milk Juice Peach Cup	22
23	24 *Froot Loops Kit Milk Juice Pinnacle Cup	25 *Golden Graham Kit Milk Juice Mandarin Orange Cup	26 *Multigrain Cheerios kit Milk Juice Pear Cup	27 *Cinn. Toast Crunch Kit Milk Juice Mix Fruit Cup	28 Cocoa Puffs Milk Juice Peach Cup	29
30 	31 *Froot Loops Kit Milk Juice Pinnacle Cup					
<p><b>Please DO NOT send students early as we do not have supervision before 8:00 am.</b>  <b>* All Bread Items Are Whole Grain or Multi Grain</b></p>						

# WILLOW SPRINGS SCHOOL DISTRICT 108

## JANUARY 2022



# STUDENT LUNCH MENU



**Mon**

**Tue**

**Wed**

**Thu**

**Fri**

<p>3</p> <p>CHICKEN NUGGETS VEGETABLE FRUIT BREADSTICK MILK</p>	<p>4</p> <p>CORNED BEEF SANDWICH VEGETABLE FRUIT MILK</p>	<p>5</p> <p>BEEF HOT DOG ON A BUN KETCHUP VEGETABLE FRUIT CHIPS MILK</p>	<p>6</p> <p>TURKEY BREAD SANDWICH WITH CHEESE VEGETABLE FRUIT GOGURT MILK</p>	<p>7</p> <p>BOSCO STICKS MARINARA SAUCE VEGETABLE FRUIT MILK</p>
<p>10</p> <p>HAMBURGER ON A BUN KETCHUP VEGETABLE FRUIT CHIPS MILK</p>	<p>11</p> <p>ROAST BEEF SANDWICH ON BREAD WITH CHEESE VEGETABLE FRUIT MILK</p>	<p>12</p> <p>BEEF AND BEAN BURRITO SALSA VEGETABLE FRUIT MILK</p>	<p>13</p> <p>CORNED BEEF SANDWICH VEGETABLE FRUIT CHIPS MILK</p>	<p>14</p> <p>CHICKEN PATTIE ON A BUN BBQ SAUCE VEGETABLE FRUIT MILK</p>
<p>17</p> <p>MARTIN LUTHER KING'S DAY  NO STUDENT ATTENDANCE</p>	<p>18</p> <p>TURKEY SANDWICH VEGETABLE FRUIT JELLO MILK</p>	<p>19</p> <p>CHICKEN LUNCH MEAT SANDWICH VEGETABLE FRUIT CHIPS MILK</p>	<p>20</p> <p>MINI CORN DOGS VEGETABLE FRUIT MILK</p>	<p>21</p> <p>PIZZA LUCHABLE VEGETABLE FRUIT PUDDING CUP MILK</p>
<p>24</p> <p>ROAST BEEF SANDWICH ON BREAD VEGETABLE FRUIT MILK</p>	<p>25</p> <p>BEEF HOT DOG ON A BUN VEGETABLE FRUIT CHIPS MILK</p>	<p>26</p> <p>REGULAR CORN DOG MUSTARD VEGETABLE FRUIT MILK</p>	<p>27</p> <p>TURKEY HAM SANDWICH VEGETABLE FRUIT MILK</p>	<p>28</p> <p>SOY PEANUT BUTTER AND JELLY SANDWICH VEGETABLE FRUIT PUDDING MILK</p>
<p>31</p> <p>SCHOOL IMPROVEMENT DAY EARLY STUDENT DISMISSAL</p>		<p><b>ALL LUNCHES ARE SUBJECT TO CHANGE.....</b></p>		



# Willow Springs School District #108

## 2021-2022 School Calendar

July						
Sun	Mon	Tues	Wed	Thurs	Fri	Sat
					1	2
3	4	5	6	7	8	9
10	11	12	13	14	15	16
17	18	19	20	21	22	23
24	25	26	27	28	29	30
31						

August						
Sun	Mon	Tues	Wed	Thurs	Fri	Sat
1	2	3	4	5	6	7
8	9	10	11	12	13	14
15	16	17	18	19	20	21
22	23	24	25	26	27	28
29	30	31				

September						
Sun	Mon	Tues	Wed	Thurs	Fri	Sat
			1	2	3	4
5	6	7	8	9	10	11
12	13	14	15	16	17	18
19	20	21	22	23	24	25
26	27	28	29	30		

October						
Sun	Mon	Tues	Wed	Thurs	Fri	Sat
					1	2
3	4	5	6	7	8	9
10	11	12	13	14	15	16
17	18	19	20	21	22	23
24	25	26	27	28	29	30
31						

November						
Sun	Mon	Tues	Wed	Thurs	Fri	Sat
	1	2	3	4	5	6
7	8	9	10	11	12	13
14	15	16	17	18	19	20
21	22	23	24	25	26	27
28	29	30				

December						
Sun	Mon	Tues	Wed	Thurs	Fri	Sat
			1	2	3	4
5	6	7	8	9	10	11
12	13	14	15	16	17	18
19	20	21	22	23	24	25
26	27	28	29	30	31	

January						
Sun	Mon	Tues	Wed	Thurs	Fri	Sat
						1
2	3	4	5	6	7	8
9	10	11	12	13	14	15
16	17	18	19	20	21	22
23	24	25	26	27	28	29
30	31					

February						
Sun	Mon	Tues	Wed	Thurs	Fri	Sat
		1	2	3	4	5
6	7	8	9	10	11	12
13	14	15	16	17	18	19
20	21	22	23	24	25	26
27	28					

March						
Sun	Mon	Tues	Wed	Thurs	Fri	Sat
		1	2	3	4	5
6	7	8	9	10	11	12
13	14	15	16	17	18	19
20	21	22	23	24	25	26
27	28	29	30	31		

April						
Sun	Mon	Tues	Wed	Thurs	Fri	Sat
					1	2
3	4	5	6	7	8	9
10	11	12	13	14	15	16
17	18	19	20	21	22	23
24	25	26	27	28	29	30

May						
Sun	Mon	Tues	Wed	Thurs	Fri	Sat
1	2	3	4	5	6	7
8	9	10	11	12	13	14
15	16	17	18	19	20	21
22	23	24	25	26	27	28
29	30	31				

June						
Sun	Mon	Tues	Wed	Thurs	Fri	Sat
			1	2	3	4
5	6	7	8	9	10	11
12	13	14	15	16	17	18
19	20	21	22	23	24	25
26	27	28	29	30		

- No School
- Early Dismissal 11:30
- Early Dismissal 1:30
- Parent Teacher Conference

- Midterm Reports Go Home
- Report Card Go Home
- First Day of School
- Last Day of School