



# WILLOW WEEKLY

—[www.willowsschool.org](http://www.willowsschool.org)

February 11, 2022

## **NEXT WEEK AT A GLANCE/PLEASE MARK YOUR CALENDAR!**

IVY LEAGUE KIDS Before & Afterschool Care 630AM-6:00PM \* [www.ivyleaguekids.org](http://www.ivyleaguekids.org)

**Monday, February 14** – Concert Band (Woodwinds) 7:30am  
Valentine's Grams distribution day-Wear red, white or pink gear

Access Club 3:13-4:13pm

Girls' Volleyball Practice 3:20-5:00pm

Yearbook Club 3:13-4:13pm

**Tuesday, February 15-** Beginning Band (all members) 7:30am

Girls' Volleyball vs Westchester-HOME

Access Club 3:13-4:13pm

**Wednesday, February 16 -** Concert Band (Brass/Percussion) 7:30am

Access Club 3:13-4:13pm

Girls' Volleyball Practice 3:20-5:00pm

4<sup>th</sup> Grade Art Club 3:13-4:13pm

**Thursday, February 17 -** Beginning Band (all members) 7:30am

Access Club 3:13-4:13pm

5<sup>th</sup> Grade Art Club 3:13-4:13pm

Girls' Volleyball vs McClure- HOME

Theme Day – Wear your favorite Music Band/Artist gear

**Friday, February 18 -** Concert Band (all members) 7:30am

Girls' Volleyball Practice 3:20-5:00pm



Spirit Day –Wear Blue and Gold

Girls' Volleyball Practice 3:20-5:00pm

### **Coming up:**

*Monday, February 14 - 8th Grade Argo Pre-enrollment Presentation 8:45am @ Willow/ Students Only*

*Tuesday, February 15 - 8th Grade Argo Enrollment 8:45am @ Willow/ Students Only*

*Monday, February 21 –Parent Teacher Conference/Report Card Pick Up 12:00-4:00pm and 5:00-7:30pm*

Parent/Guardians will have the option to choose In Person or a Zoom Conference. You will receive an email from your student's homeroom teacher with a link to sign up for the conference.

*Wednesday, March 2- Read Across America Day*

*Monday, March 7- Casimir Pulaski Day No School*

*Monday, March 28-First day of Spring Break*

*Monday, April 4- Classes resume*

Monday, Feb 14-Turkey Ham

Tuesday, Feb 15- Mini Corn Dogs

Wednesday, Feb 16- Hot Dog

Thursday, Feb 17- Soy PB & J

Friday Feb 18- Lunchable





**Willow Springs 108**

8345 Archer Ave  
Willow Springs, IL 60480

**Alexandra Oreluk**  
**Principal**

Phone: (708) 839-6828  
[aoreluk@willowsschool.org](mailto:aoreluk@willowsschool.org)  
[www.willowsschool.org](http://www.willowsschool.org)

Dear 8th Grade Willow Families,

February 11, 2022

Happy Friday! I wanted to take a few moments to inform you of two upcoming events for our 8th grade students at Willow!

Monday, February 14th:

- Dan McCarthy (Argo Department Chair for the Argo Guidance Department) will discuss the registration process, Freshman course options and answer any questions about Argo.
- This will be about a one hour presentation at Willow in our Library.

Tuesday, February 15th:

- All 8th grade students will have an individual enrollment meeting with their Guidance Counselor. The purpose of this meeting is to discuss PSAT 8 Test scores, placement in core classes as well as elective courses.
- This event will take place at Willow in our Library.

This is an incredibly exciting time for our 8th grade students as they prepare for the next steps in their educational journey. We are excited to partner with Argo High School!

Please feel free to reach out with any questions!

- Miss Oreluk

## **Substitute Lunchroom/ Recess Monitors needed**

**HELP  
WANTED  
APPLY  
WITHIN**

**Position Summary:** The Lunchroom/Recess Attendant will monitor and assist classrooms during lunch periods. This is a part-time, benefits-ineligible position. The work schedule will be: Monday - Friday, from 10:30am to 1:30pm.

### Principal Duties And Responsibilities

- Provide supervision of students during lunch periods in the cafeteria and recess
- Monitors student behavior in assigned areas to ensure compliance with school rules and procedures.
- Manages misconduct by students in tactful and diplomatic manner.
- Must be able to lift 30lbs plus Other duties as assigned

**How to apply:** Call Mrs. Wacker to schedule an appointment to fill out an application 708-839-6828



# Custodians Needed!



Please come to the office from 10:00-2:00pm to fill out an application with Mrs.Wacker.

- **Lunch Custodian Position Summary:** The custodian will assist during lunch periods/transitions. Must be able to lift 30lbs. This is a part-time, benefits-ineligible position. The work schedule will be: Monday-Friday 10:00am-3:00pm. The pay is \$12.00 per hour.
- **Substitute Custodian Position Summary:** The custodian will be a substitute custodian. Must be able to lift 30lbs. This is a part-time, benefits-ineligible position. The work schedule will be only as needed. The pay is \$12.00 per hour.

# WILLOW SPRINGS PUBLIC SCHOOL

DISTRICT 108 • COOK COUNTY

SUPERINTENDENT • STEVE BAHN  
PRINCIPAL • ALEXANDRA ORELUK

8345 ARCHER AVENUE  
WILLOW SPRINGS, ILLINOIS 60480-1499  
PHONE (708) 839-6828 • FAX (708) 839-8399  
[www.willowspringsschool.org](http://www.willowspringsschool.org)

February 11, 2022

Dear Willow Families,

If your child has been fully vaccinated for Covid-19 (2 doses) or has been fully vaccinated, and has received their 3<sup>rd</sup> dose (booster) you can forward a copy of your child's vaccination card to the nurses office if you choose. This is completely voluntary. The vaccine card information helps to assist in determining if a close contact of a confirmed case of Covid-19 is able to remain in school. Please let me know if you have any questions. Vaccination cards can be emailed directly to me using the address below. Thank you for your continued support and understanding in helping to keep our school environment safe!

Sincerely,

Lisa Perea MSN, RN, IL PEL-SN, NCSN

School Nurse

Willow Springs School District 108

[lperea@willowspringsschool.org](mailto:lperea@willowspringsschool.org)

708-467-3511



WILLOW SPRINGS SCHOOL, WHERE A LOVE OF LEARNING GROWS.

**WILLOW SPRINGS LIONESSE LION CLUB  
SCHOLARSHIP**

**SELECTIONS WILL BE BASED ON:**

- A- Current resident of Willow Springs, Illinois for at least one year.
- B- Applicants must have at least a 3.0 cumulative grade point average in a 4.0 system. A legible transcript must be included with application.
- C- Must be currently enrolled or accepted to an accredited college, university, or community college, as a full time student. (12 semester hours or more)
- D- Must show interest in outside academic activities (EX- school/community clubs, office held, awards etc)
- E- Financial need/academic performance
- F- Applications should be sent to  
Lioness Lion Cindy Layer  
clayer@willowspringsschool.org

**\*\* All Applications are due by Friday, February 18, 2022 \*\***

All applicants will be notified when selection is completed.

WILLOW SPRINGS LIONESSE LIONS CLUB  
SCHOLARSHIP APPLICATION

TO THE APPLICANT: THIS APPLICATION MUST BE TYPED OR PRINTED AND RETURNED NO LATER THAN ***FEBRUARY 18, 2022***. NO ACTION WILL BE TAKEN ON APPLICATIONS RECEIVED AFTER THIS DATE. THIS INFORMATION IS TO BE USED BY THE SCHOLARSHIP COMMITTEE AND AS SUCH IT IS CONSIDERED CONFIDENTIAL.

1. Name \_\_\_\_\_ Gender \_\_\_\_\_ Birthdate \_\_\_\_\_
2. Home Address \_\_\_\_\_
3. How long have you resided at this address? \_\_\_\_\_
4. Telephone number \_\_\_\_\_ Cell phone number \_\_\_\_\_
5. Father's Name \_\_\_\_\_ Father's Occupation \_\_\_\_\_
6. Father's Employer \_\_\_\_\_
7. How long employed there? \_\_\_\_\_ Full or part time? \_\_\_\_\_
8. Mother's Name \_\_\_\_\_ Mother's occupation \_\_\_\_\_
9. Mother's employer \_\_\_\_\_ How long there? \_\_\_\_\_
10. Full or part time? \_\_\_\_\_
11. Number of dependent children in family? Brothers \_\_\_\_\_ Ages \_\_\_\_\_  
Sisters \_\_\_\_\_ Ages \_\_\_\_\_
12. What School do you attend? \_\_\_\_\_
13. What is your cumulative GPA? \_\_\_\_\_ in a \_\_\_\_\_ point system.
14. List the extra-curricular activities in which you have participated while in high school including offices held and number of years participated.  
\_\_\_\_\_  
\_\_\_\_\_
15. If currently attending college, list the extra-curricular activities in which you have participated including offices held and number of years participated.  
\_\_\_\_\_  
\_\_\_\_\_

16. In what clubs or activities (not directly connected with school) have you participated?  
\_\_\_\_\_

17. What awards/honors have you received? \_\_\_\_\_

18. What college do you plan to attend? \_\_\_\_\_ Major \_\_\_\_\_

19. Will you be attending full time (12 semester hours or more)? \_\_\_\_\_

20. Have you applied? \_\_\_\_\_ Have you been accepted? \_\_\_\_\_

21. How much will it cost to attend this school for one year? \_\_\_\_\_

Tuition \_\_\_\_\_ Room and Board \_\_\_\_\_ Fees(books etc) \_\_\_\_\_

22. How much contribution do you expect from your parents? \_\_\_\_\_  
From self? \_\_\_\_\_

23. What part time or full time jobs have you had in the past two years? \_\_\_\_\_ How  
many hours did you work? \_\_\_\_\_

24. Are you currently employed? \_\_\_\_\_ If so where? \_\_\_\_\_  
How many hours do you currently work? \_\_\_\_\_

25. Will you accept work-study aid in college? \_\_\_\_\_

26. Do you plan to work this summer? \_\_\_\_\_ Where? \_\_\_\_\_

27. Please explain your qualifications for a scholarship and your financial needs:  
\_\_\_\_\_

28. List any scholarships, grants or loans you have applied for and/or been awarded and  
their value \_\_\_\_\_

29. List the number of persons in your immediate family that will be attending college or  
vocational school next year. \_\_\_\_\_

30. On a separate piece of paper, write 150-200 words on why you wish to continue your  
education and explain your career plans.

**\*\*PLEASE ATTACH ESSAY AND GRADE TRANSCRIPTS TO THIS FORM AND  
RETURN TO: Cindy Layer, Willow Springs Lioness Lion Scholarship CO-Chairperson,  
email [clayer@willowsschool.org](mailto:clayer@willowsschool.org)**

Signature of Applicant \_\_\_\_\_ Date \_\_\_\_\_

# WINTER WEATHER

A friendly reminder to parents to bundle up their student(s) for school

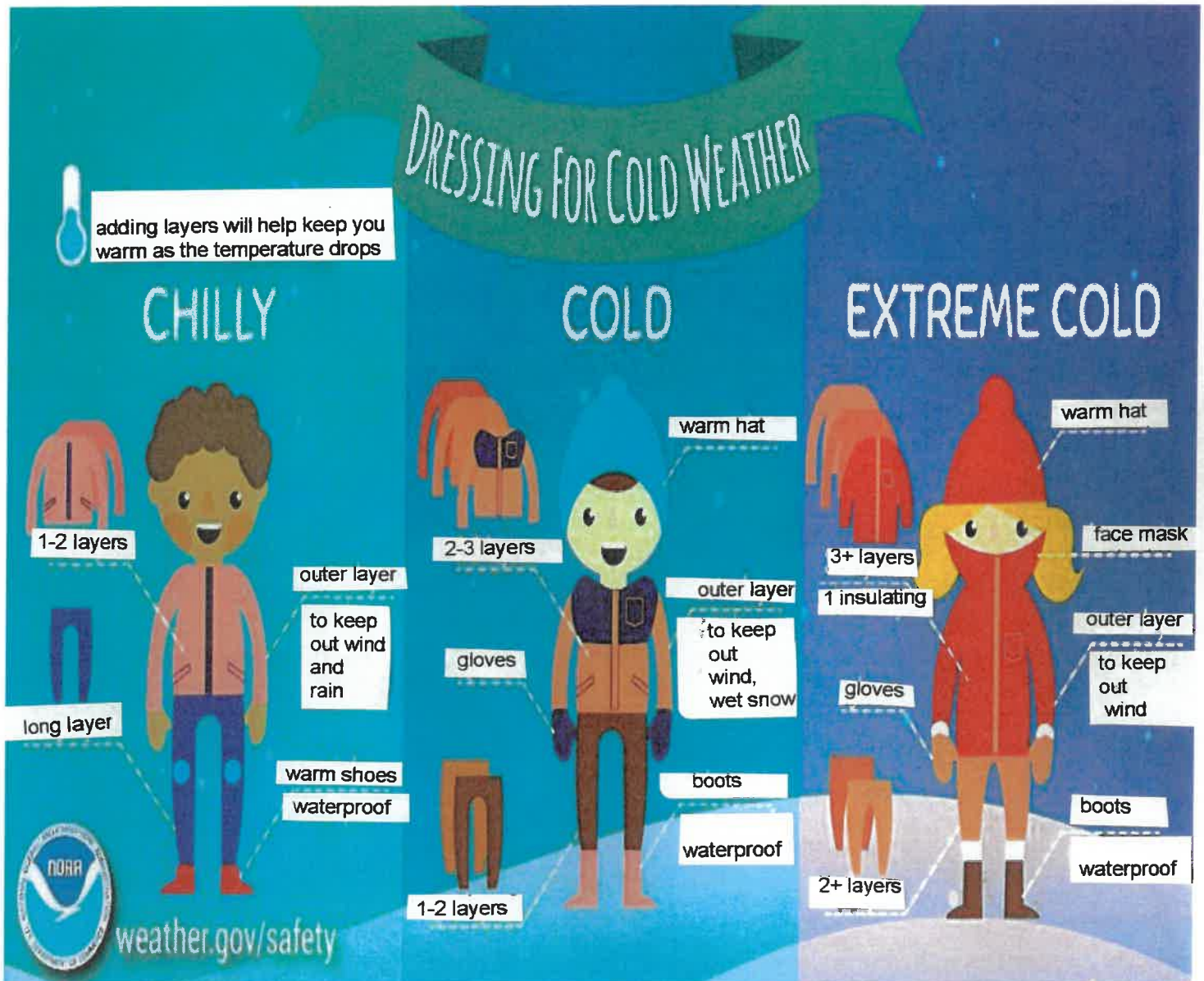
## 8:10am Morning Supervision, Is it indoor or outdoor?

**Indoors:** The temperature is 19 degrees or lower or its raining. K-8 Students will walk directly to their class starting at 8:10am

**Outdoors:** The temperature is 20 degrees and above. All K-8 students will remain outside until the bell rings.

**Recess:** The temperature is 20 degrees and above. Students will go outdoors for recess/ mask breaks

Staff supervision begins at 8:10am. Do **NOT** leave your child unattended prior to that time. If you are in need of child care, please call Ivy League Kids at (815) 464-1265 or visit the web page at: <https://ivyleaguekids.org/>







## **Willow Springs 108**

8345 Archer Ave  
Willow Springs, IL 60480

**Alexandra Oreluk**

**Principal**

Phone: (708) 839-6828

[aoreluk@willowsschool.org](mailto:aoreluk@willowsschool.org)

[www.willowsschool.org](http://www.willowsschool.org)

Dear Willow Families,

January 31, 2022

Now that winter is in full swing, I wanted to take a moment to provide you with a few friendly reminders about our expectations for student drop-off and pick-up at Willow. The safety of our students is our number one priority and following these guidelines will help maintain a safe environment for our students, staff, and parents.

If parents choose to drive students to school, they should be dropped off on Vinewood between 8:10 and 8:25 AM. Students may NOT be dropped off in the parking lot off of Archer Ave. The yellow highlighted area depicts where drop off should take place. The red arrows provide guidance as to the drop off route. Please see the picture below.



Our school day ends at 3:13 PM. Students may be picked up on Vinewood at that time. Students are NOT to be picked up in our parking lot off Archer Ave. Please follow the same routes as above. If students have not been picked up by 3:30 PM, they will be brought to the



## **Willow Springs 108**

8345 Archer Ave  
Willow Springs, IL 60480

**Alexandra Oreluk**  
Principal

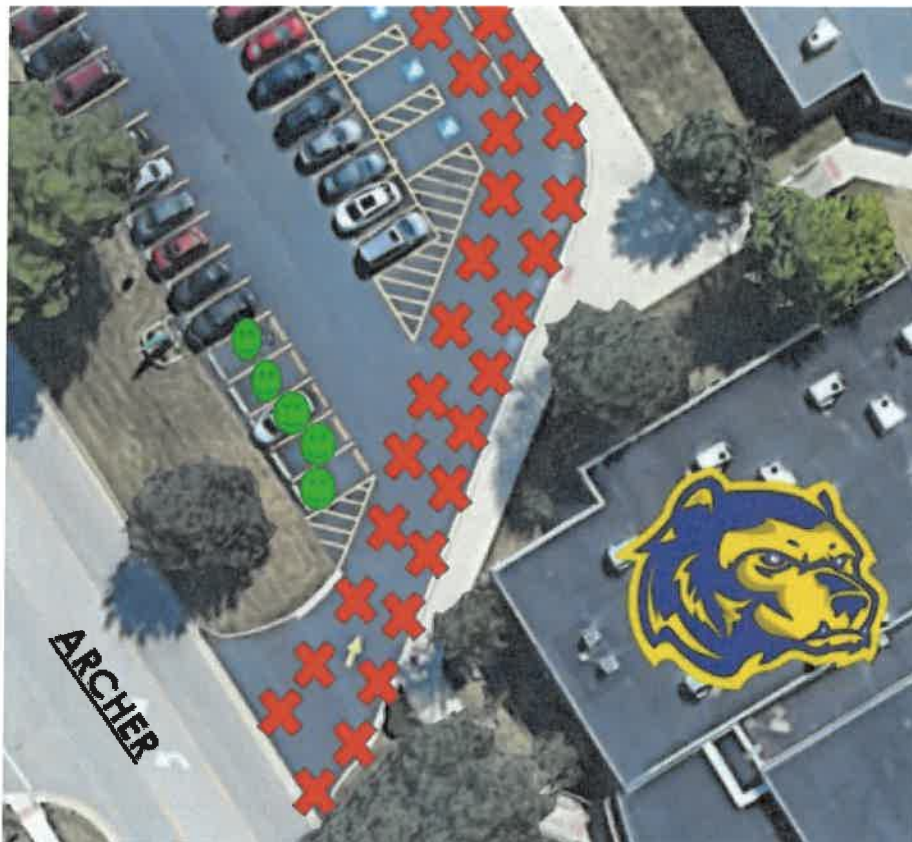
Phone: (708) 839-6828

[aoreluk@willowsschool.org](mailto:aoreluk@willowsschool.org)

[www.willowsschool.org](http://www.willowsschool.org)

main office and parents will be contacted. Parking expectations for late pickups are the same as for late drop offs.

If students arrive at school after 8:30 AM should be dropped off in the front of the building. Individuals that drop off students after 8:30 AM should park in our lot (depicted by the green marks on the map below) and walk students into the main office. Cars should NEVER park or stop to drop students in the area marked by red Xs on the map. This is our bus drop off location and cars parking in this area can lead to an unsafe parking lot. These parking expectations are the same for late pickups (after 3:30). Please see the picture below.



I appreciate your attention to this matter. Please feel free to contact me with any questions or concerns.

Sincerely,

-Miss Oreluk

# Willow Springs School District #108

## 2021-2022 School Calendar

July						
Sun	Mon	Tues	Wed	Thurs	Fri	Sat
					1	2
3	4	5	6	7	8	9
10	11	12	13	14	15	16
17	18	19	20	21	22	23
24	25	26	27	28	29	30
31						

August						
Sun	Mon	Tues	Wed	Thurs	Fri	Sat
1	2	3	4	5	6	7
8	9	10	11	12	13	14
15	16	17	18	19	20	21
22	23	24	25	26	27	28
29	30	31				

September						
Sun	Mon	Tues	Wed	Thurs	Fri	Sat
			1	2	3	4
5	6	7	8	9	10	11
12	13	14	15	16	17	18
19	20	21	22	23	24	25
26	27	28	29	30		

October						
Sun	Mon	Tues	Wed	Thurs	Fri	Sat
					1	2
3	4	5	6	7	8	9
10	11	12	13	14	15	16
17	18	19	20	21	22	23
24	25	26	27	28	29	30
31						

November						
Sun	Mon	Tues	Wed	Thurs	Fri	Sat
	1	2	3	4	5	6
7	8	9	10	11	12	13
14	15	16	17	18	19	20
21	22	23	24	25	26	27
28	29	30				

December						
Sun	Mon	Tues	Wed	Thurs	Fri	Sat
			1	2	3	4
5	6	7	8	9	10	11
12	13	14	15	16	17	18
19	20	21	22	23	24	25
26	27	28	29	30	31	

January						
Sun	Mon	Tues	Wed	Thurs	Fri	Sat
						1
2	3	4	5	6	7	8
9	10	11	12	13	14	15
16	17	18	19	20	21	22
23	24	25	26	27	28	29
30	31					

February						
Sun	Mon	Tues	Wed	Thurs	Fri	Sat
		1	2	3	4	5
6	7	8	9	10	11	12
13	14	15	16	17	18	19
20	21	22	23	24	25	26
27	28					

March						
Sun	Mon	Tues	Wed	Thurs	Fri	Sat
		1	2	3	4	5
6	7	8	9	10	11	12
13	14	15	16	17	18	19
20	21	22	23	24	25	26
27	28	29	30	31		

April						
Sun	Mon	Tues	Wed	Thurs	Fri	Sat
					1	2
3	4	5	6	7	8	9
10	11	12	13	14	15	16
17	18	19	20	21	22	23
24	25	26	27	28	29	30

May						
Sun	Mon	Tues	Wed	Thurs	Fri	Sat
1	2	3	4	5	6	7
8	9	10	11	12	13	14
15	16	17	18	19	20	21
22	23	24	25	26	27	28
29	30	31				

June						
Sun	Mon	Tues	Wed	Thurs	Fri	Sat
			1	2	3	4
5	6	7	8	9	10	11
12	13	14	15	16	17	18
19	20	21	22	23	24	25
26	27	28	29	30		

- No School
- Early Dismissal 11:30
- Early Dismissal 1:30
- Parent Teacher Conference

- Midterm Reports Go Home
- Report Card Go Home
- First Day of School
- Last Day of School

# WILLOW SPRINGS SCHOOL DISTRICT 108

## FEBRUARY 2022



# STUDENT LUNCH MENU








**Mon**

**Tue**

**Wed**

**Thu**

**Fri**

Mon	Tue	Wed	Thu	Fri
	1 CORNED BEEF SANDWICH VEGETABLE FRUIT MILK	2 BEEF HOT DOG ON A BUN KETCHUP VEGETABLE FRUIT CHIPS MILK 	3 TURKEY BREAST SANDWICH WITH CHEESE VEGETABLE FRUIT CHIPS MILK	4 CHEESE HOT POCKET VEGETABLE FRUIT MILK
<i>Turkey sandwich</i> <del>HAMBURGER ON A BUN</del> KETCHUP VEGETABLE FRUIT MILK	8 CHICKEN LUNCH-MEAT SANDWICH VEGETABLE FRUIT CHIPS MILK	9 CHICKEN PATTIE ON A BUN BBQ SAUCE VEGETABLE FRUIT MILK	10 ROAST BEEF SANDWICH WITH CHEESE VEGETABLE FRUIT MILK	11 BEEF AND BEAN BURRITO SALSA VEGETABLE FRUIT MILK
14 TURKEY HAM SANDWICH  VEGETABLE FRUIT PUDDING CUP MILK	15 MINI CORN DOGS VEGETABLE FRUIT CHIPS MILK	16 HOT DOG ON A BUN KETCHUP VEGETABLE FRUIT MILK	<i>soy</i> 17 <i>PBJ</i> CHICKEN NOODLE SOUP CRACKERS SALAD FRUIT MILK	18 <i>Lunchable</i> TURKEY SANDWICH SALAD FRUIT CHIPS MILK
21 <i>PARENT/TEACHER CONFERENCES</i> <i>NO STUDENT ATTENDANCE</i> 	22 CHICKEN NUGGETS KETCHUP VEGETABLE FRUIT BREADSTICK MILK	23 CORNED BEEF SANDWICH MUSTARD VEGETABLE FRUIT MILK	24 PANCAKE MINI TURKEY WRAPS (MAPLE) APPLESAUCE VEGETABLE MILK	25 TURKEY SANDWICH WITH CHEESE VEGETABLE FRUIT MILK
28 HAMBURGER ON A BUN KETCHUP VEGETABLE FRUIT CHIPS MILK		<b>ALL LUNCHES ARE SUBJECT TO CHANGE.....</b>		