



# WILLOW WEEKLY

[www.willowsschool.org](http://www.willowsschool.org)

March 25, 2022

## **NEXT WEEK AT A GLANCE/PLEASE MARK YOUR CALENDAR!**

IVY LEAGUE KIDS Before & Afterschool Care 630AM-6:00PM \* [www.ivyleaguekids.org](http://www.ivyleaguekids.org)

\*SPRING BREAK OFFICE HOURS Tuesday-Friday 8:00-2:00pm -Closed, Monday, March 28\*



# NO SCHOOL



# Spring Break

MARCH 28 - APRIL 1, 2022



### **Monday, April 4-** School Resumes

Concert Band (Woodwinds) 7:30am

Girls' Softball Practice 3:15-5:00pm

Access Club 3:13-4:13pm

Jr. High Co Ed Soccer 3:15-5:00pm

### **Tuesday, April 5-** Beginning Band (Woodwinds) 7:30am

5<sup>th</sup> Grade Art Club

Girls' Softball Practice 3:15-5:00pm

Access Club 3:13-4:13pm

Jr. High Co Ed Soccer 3:15-5:00pm

Reading Club 3:13-4:13pm

### **Wednesday, April 6** –Concert Band (Brass/Percussion) 7:30am

Girls' Softball Practice 3:15-5:00pm

Access Club 3:13-4:13pm

Jr. High Co Ed Soccer 3:15-5:00pm

4<sup>th</sup> Grade Art Club


### **Thursday, April 7** –Beginning Band (Brass/Percussion) 7:30am

Girls' Softball vs Gurrie-HOME

Jr. High Co Ed Soccer vs Pleasantdale- AWAY

Access Club 3:13-4:13pm

Theme Day Thursday- Cubs Opening Day wear Cubs gear or red and blue

**Friday, April 8 – Concert Band (All Members) 7:30am**  
**Spirit Day- Wear Spirit Wear / Blue and Gold**   
**Girls' Softball Practice 3:15-5:00pm**  
**Jr. High Co Ed Soccer 3:15-5:00pm**

**Coming up:**

*Tuesday, April 12- Mobile Dentist*

*Thursday, April 14- 4<sup>th</sup> Quarter MidTerm*

*Friday, April 15<sup>th</sup> –No Student Attendance –No School*

*Friday, April 22<sup>nd</sup>- 4<sup>th</sup> Quarter Mid-Term reports go home with students*

*Monday, April 25<sup>th</sup> – School Improvement Day Early Dismissal 11:30am*



Monday, April 4-Beef Hot Dog  
Tuesday, April 5-Chicken Tenders  
Wednesday, April 6-Roast Beef Sandwich  
Thursday, April 7-Beef Hamburger  
Friday April 8-French Toast

**Online Student fee payment**

In TeacherEase, parents can pay online for student fees. This can save time and a trip to the school to fill the student's lunch account or pay for the yearbook and other fees. It is worth mentioning that a parent can view and pay for all their children's fees online from the same page.

Follow these steps to make a payment on the parent portal:



1. Go to **Parent Main > Miscellaneous > Fees**
2. **Make Online Payment**
3. **Continue**
4. Enter your credit/debit card information
5. **Submit Payment**
6. A receipt will be available on the next screen for printing and adding to your records
7. Any questions regarding fees please call Mrs. Wacker 708-839-6828



WILLOW SPRINGS SCHOOL  
**WOLVERINES**



*Save the Date*

**8TH GRADE GRADUATION**

**WILLOW SPRINGS SCHOOL 8345 ARCHER RD WILLOW SPRINGS, IL 60480  
MONDAY, MAY 23RD AT 7:00PM (STUDENT GYMNASIUM)**

**(Ticketed event/ 5 guests per student)**

## Substitute Lunchroom/ Recess Monitors needed

**HELP  
WANTED  
APPLY  
WITHIN**

Position Summary: The Lunchroom/Recess Attendant will monitor and assist classrooms during lunch periods. This is a part-time, benefits-ineligible position. The work schedule will be: Monday - Friday, from 10:30am to 1:30pm.

### Principal Duties And Responsibilities

- Provide supervision of students during lunch periods in the cafeteria and recess
- Monitors student behavior in assigned areas to ensure compliance with school rules and procedures.
- Manages misconduct by students in tactful and diplomatic manner.
- Must be able to lift 30lbs plus Other duties as assigned

How to apply: Call Mrs. Wacker to schedule an appointment to fill out an application 708-839-6828



Please come to the office from 10:00-2:00pm to fill out an application with Mrs.Wacker.

Justice Park District

Spring Craft show

Saturday, April 2

9 am - 4 pm

7747 Oak Grove Avenue Justice, IL

Over 20 Crafters,  
Concession Stand & Bake  
Sale

www.JusticeParkDistrict.com

Made with PosterMyWall.com



# Lions of Illinois Foundation

*Serving People with Vision and Hearing Needs Since 1974.*

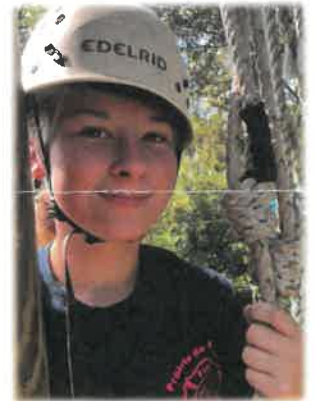
## Greetings from Camp Lions Youth Summer Camps *For blind/partially sighted and or Deaf/HoH.*



The Lions of Illinois Foundation and the Lions and Leo clubs throughout Illinois would like to invite eligible campers to enjoy our Free summer camps for the **2022 Camp Lions Summer Camp Season!**

Camp Lions is a **FREE** summer camp for youth and adults who are blind/partially sighted and or Deaf/HoH. Camp Lions is **not** income based.

Camp Lions of Illinois was opened in 1957 at the YMCA campsite in Ravenswood, Illinois. Today Camp Lions has three camp sites throughout Illinois providing a Camp Lions location in the north, central, and southern regions.



Eligible campers must be between the ages of **7-17 years old** for youth camp and adults **18 years and older**, and must have either a vision loss of 20/70 after best correction and/or a hearing loss which requires daily use of communication alternatives such as sign language or lip reading and/or use of a hearing aid, cochlear implant, or similar auditory device.



One thing that has never changed at Camp Lions is the idea of providing a safe, positive place for blind and/or deaf youth and adults to enjoy summer camp with their peers. And this couldn't be done without our amazing Camp Directors and camp counselors.

Counselors encourage every camper to reach for new goals, strengthening their abilities & self-esteem. This philosophy has given thousands of campers a chance to grow self-confidence in a fun, sports & nature program.



**Do you know someone who could benefit from our camp program?**

**REGISTER TODAY AT [LionsOfIllinoisFoundation.org](http://LionsOfIllinoisFoundation.org)**

**Please distribute the enclosed information to:**

**Students, Teachers, Families and Friends**



shutterstock.com • 602566124

# THE DENTIST IS COMING!!!

**April 12<sup>th</sup>, 2022**

**This is a FREE service to those with Medicaid or uninsured!**

If you are an incoming Kindergarten, 2<sup>nd</sup> grader or 6<sup>th</sup> grader this exam will count towards your 2022/2023 school year State requirement.

You can also sign up online at:

**[https://www.myschooldentist.com/WSWSIL\\_schsrn](https://www.myschooldentist.com/WSWSIL_schsrn)**

# WILLOW SPRINGS SCHOOL DISTRICT 108

## APRIL 2022



# STUDENT LUNCH MENU



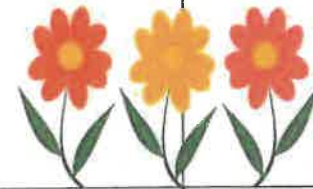
**Mon**

**Tue**

**Wed**

**Thu**

**Fri**



								1	
4		5		6		7		8	
<b>BEEF HOT DOG ON A BUN</b> <b>KETCHUP</b> <b>VEGETABLE</b> <b>FRUIT</b> <b>MILK</b>		<b>CHICKEN TENDERS</b> <b>BBQ SAUCE</b> <b>VEGETABLE</b> <b>FRUIT</b> <b>1 SLICE OF BREAD</b> <b>MILK</b>		<b>ROAST BEEF SANDWICH</b> <b>VEGETABLE</b> <b>FRUIT</b> <b>CHIPS</b> <b>MILK</b>		<b>BEEF HAMBURGER ON A BUN</b> <b>KETCHUP</b> <b>VEGETABLE FRUIT</b> <b>CHIPS MILK</b>		<b>FRENCH TOAST SYRUP</b> <b>VEGETABLE</b> <b>APPLESAUCE</b> <b>MILK</b>	
11		12		13		14		15	
<b>ROAST BEEF SANDWICH WITH CHEESE</b> <b>VEGETABLE</b> <b>FRUIT</b> <b>MILK</b>		<b>MINI CORN DOGS</b> <b>MUSTARD</b> <b>VEGETABLE</b> <b>FRUIT</b> <b>MILK</b>		<b>CHICKEN LUNCH MEAT SANDWICH</b> <b>VEGETABLE FRUIT</b> <b>CHIPS</b> <b>MILK</b>		<b>BREADED CHICKEN PATITE ON A BUN</b> <b>BBQ SAUCE</b> <b>VEGETABLE FRUIT</b> <b>MILK</b>		<b>NON ATTENDANCE DAY</b>	
18		19		20		21		22	
<b>LUNCHABLE</b> <b>VEGETABLE</b> <b>FRUIT</b> <b>PUDDING CUP</b> <b>MILK</b>		<b>BEEF HOT DOG ON A BUN</b> <b>KETCHUP</b> <b>VEGETABLE</b> <b>FRUIT</b> <b>MILK</b>		<b>TURKEY HAM SANDWICH</b> <b>VEGETABLE</b> <b>FRUIT CHIPS</b> <b>MILK</b>		<b>CHICKEN NUGGETS</b> <b>BBQ SAUCE</b> <b>VEGETABLE FRUIT</b> <b>BREAD STICK</b> <b>MILK</b>		<b>CORNEBEEF SANDWICH WITH CHEESE</b> <b>VEGETABLE FRUIT</b> <b>CHIPS</b> <b>MILK</b>	
25		26		27		28		29	
<b>SCHOOL IMPROVEMENT DAY EARLY STUDENT DISMISSAL</b>		<b>ROAST BEEF SANDWICH</b> <b>VEGETABLE</b> <b>FRUIT</b> <b>CHIPS</b> <b>MILK</b>		<b>HAMBURGER ON A BUN</b> <b>KETCHUP</b> <b>VEGETABLE</b> <b>FRUIT</b> <b>MILK</b>		<b>TURKEY LUNCHMEAT SANDWICH</b> <b>VEGETABLE FRUIT</b> <b>CHIPS</b> <b>MILK</b>		<b>CHICKEN SOUP</b> <b>CRACKERS</b> <b>SALAD WITH DRESSING</b> <b>FRUIT</b> <b>MILK</b>	

**ALL LUNCHES ARE SUBJECT TO CHANGE.....**





## 2022 Summer School Courses

[www.argohs.net](http://www.argohs.net)

<b>Session 1</b>			
<b>Monday</b>	<b>Tuesday</b>	<b>Wednesday</b>	<b>Thursday</b>
June 6	June 7	June 8	June 9
June 13	June 14	June 15	June 16
June 20	June 21	June 22	June 23

<b>Session 2</b>				
<b>Monday</b>	<b>Tuesday</b>	<b>Wednesday</b>	<b>Thursday</b>	<b>Friday</b>
June 27	June 28	June 29	June 30	
HOLIDAY	July 5	July 6	July 7	July 8
July 11	July 12	July 13	July 14	

**Hours**  
8:00 - 12:30

Summer School Website:

**REGISTRATION:**

<https://argohs.revtrak.net/RW-Summer-School/>

Scan the QR Code Below to Register





# Willow Springs School District #108

## 2021-2022 School Calendar

July						
Sun	Mon	Tues	Wed	Thurs	Fri	Sat
					1	2
3	4	5	6	7	8	9
10	11	12	13	14	15	16
17	18	19	20	21	22	23
24	25	26	27	28	29	30
31						

August						
Sun	Mon	Tues	Wed	Thurs	Fri	Sat
1	2	3	4	5	6	7
8	9	10	11	12	13	14
15	16	17	18	19	20	21
22	23	24	25	26	27	28
29	30	31				

September						
Sun	Mon	Tues	Wed	Thurs	Fri	Sat
			1	2	3	4
5	6	7	8	9	10	11
12	13	14	15	16	17	18
19	20	21	22	23	24	25
26	27	28	29	30		

October						
Sun	Mon	Tues	Wed	Thurs	Fri	Sat
					1	2
3	4	5	6	7	8	9
10	11	12	13	14	15	16
17	18	19	20	21	22	23
24	25	26	27	28	29	30
31						

November						
Sun	Mon	Tues	Wed	Thurs	Fri	Sat
	1	2	3	4	5	6
7	8	9	10	11	12	13
14	15	16	17	18	19	20
21	22	23	24	25	26	27
28	29	30				

December						
Sun	Mon	Tues	Wed	Thurs	Fri	Sat
			1	2	3	4
5	6	7	8	9	10	11
12	13	14	15	16	17	18
19	20	21	22	23	24	25
26	27	28	29	30	31	

January						
Sun	Mon	Tues	Wed	Thurs	Fri	Sat
						1
2	3	4	5	6	7	8
9	10	11	12	13	14	15
16	17	18	19	20	21	22
23	24	25	26	27	28	29
30	31					

February						
Sun	Mon	Tues	Wed	Thurs	Fri	Sat
		1	2	3	4	5
6	7	8	9	10	11	12
13	14	15	16	17	18	19
20	21	22	23	24	25	26
27	28					

March						
Sun	Mon	Tues	Wed	Thurs	Fri	Sat
		1	2	3	4	5
6	7	8	9	10	11	12
13	14	15	16	17	18	19
20	21	22	23	24	25	26
27	28	29	30	31		

April						
Sun	Mon	Tues	Wed	Thurs	Fri	Sat
					1	2
3	4	5	6	7	8	9
10	11	12	13	14	15	16
17	18	19	20	21	22	23
24	25	26	27	28	29	30

May						
Sun	Mon	Tues	Wed	Thurs	Fri	Sat
1	2	3	4	5	6	7
8	9	10	11	12	13	14
15	16	17	18	19	20	21
22	23	24	25	26	27	28
29	30	31				

June						
Sun	Mon	Tues	Wed	Thurs	Fri	Sat
			1	2	3	4
5	6	7	8	9	10	11
12	13	14	15	16	17	18
19	20	21	22	23	24	25
26	27	28	29	30		

- No School
- Early Dismissal 11:30
- Early Dismissal 1:30
- Parent Teacher Conference

- Midterm Reports Go Home
- Report Card Go Home
- First Day of School
- Last Day of School