



WILLOW SPRINGS SCHOOL **WOLVERINES**

Willow Weekly: October 6, , 2023

BREAKFAST

SERVED 8:00-8:20AM
BREAKFAST BUS PICKS UP AT 7:45 & 7:50AM
(At Sterling Estates)

Monday, October 9-NO SCHOOL

- **Columbus/Indigenous Peoples' Day**

Tuesday, October 10

- Concert Band Rehearsals 7/8 Grades 7:40-8:25am
- 4th Grade Art Club 3:13-4:13
- Cross Country Practice 3:15-5:00
- Jr. High Homework Club 3:13 - 4:13
- Girls Basketball Practice 3:15-5:00
- Beginning Band Brass/Percussion 3:15-4:15

Wednesday, October 11

- Law Enforcement/Lock Down/Active Intruder/Active Shooter Drill.
- Early Dismissal Wednesday 2:13
- E/C and TK Dismissal 2:45
- Cross Country Study Hall/Practice 3:15-5:00
- Girls Basketball Practice 3:15-5:00
- Student Picture Samples and packages go home

Thursday, October 12

- Concert Band rehearsal all students 7:40-8:25
- Student Council 3:15-4:15
- Theme Thursday- Harry Potter Day (Book character)
- Loyola Mobile Clinic (must sign up)
- 5th Grade Art Club 3:13-4:13
- Jr. High Homework Club 3:13 - 4:13
- Cross Country Meet-AWAY
- **LAST** Girls Basketball vs Pleasantdale-AWAY
- Beginning Band All Students 3:15-4:15

Friday, October 13

- PFC Popcorn day
- 8th Grade Girls' Basketball vs Staff
- Cross Country Practice 3:15-5:00

Principal's Message

Dear Willow Families,

Happy Friday! I hope that all of the families enjoy the long weekend.

On Wednesday, October 11th, in collaboration with the Willow Springs Police Department, we will have a Law Enforcement/Lock Down/Active Intruder/Active Shooter Drill.

This drill is a compliance requirement for the Illinois State Board of Education and must be completed on an annual basis. While these drills are never fun, it is important that our students and staff practice safety measures. We work closely with the Willow Springs Police Department to ensure that our procedures in place at school are the best and safest for our students and staff.

Please feel free to reach out to me with any questions or concerns.

Sincerely,
Dr. Alexandra Oreluk

Upcoming Dates!

Mon, October 16- Yearbook Club Meeting 315-415

Wed, Oct 18- PFC Meeting TBD

Thurs, Oct 19- Flannel day

PFC Haunted Trails Fundraiser 400-800

Fri, October 20- Fall Picture Retake Day

1st Grade Field Trip to the Corn Maze

Mon, October 23- E/C, TK & Kindergarten Field Trip

Wed, Oct 25-School Board Meeting 6:30

Thurs, October 26- Orange & Black Day

Bus Evacuation Drill

5th grade field trip to Planetarium

Tues, October 31- Halloween * No costumes

Willow Fall Fest

Whats for Lunch?

Monday- No School No Lunch

Tuesday- Beef Nachos

Wednesday- Chicken Sandwich

Thursday- Honey BBQ Wings

Friday- Pizza



WILLOW SPRINGS SCHOOL **WOLVERINES**

Willow Weekly: October 6, , 2023

BREAKFAST

SERVED 8:00-8:20AM
BREAKFAST BUS PICKS UP AT 7:45 & 7:50AM
(At Sterling Estates)

Monday, October 9-NO SCHOOL

• **Columbus/Indigenous Peoples' Day**

Tuesday, October 10

- Concert Band Rehearsals 7/8 Grades 7:40-8:25am
- 4th Grade Art Club 3:13-4:13
- Cross Country Practice 3:15-5:00
- Jr. High Homework Club 3:13 - 4:13
- Girls Basketball Practice 3:15-5:00
- Beginning Band Brass/Percussion 315-415

Wednesday, October 11

- Law Enforcement/Lock Down/Active Intruder/Active Shooter Drill.
- Early Dismissal Wednesday 2:13
- E/C and TK Dismissal 2:45
- Cross Country Study Hall/Practice 3:15-5:00
- Girls Basketball Practice 3:15-5:00
- Student Picture Samples and packages go home

Thursday, October 12

- Concert Band rehearsal all students 7:40-8:25
- Student Council 3:15-4:15
- Theme Thursday- Harry Potter Day (Book character)
- Loyola Mobile Clinic (must sign up)
- 5th Grade Art Club 3:13-4:13
- Jr. High Homework Club 3:13 - 4:13
- Cross Country Meet-AWAY
- **LAST** Girls Basketball vs Pleasantdale-AWAY
- Beginning Band All Students 315-415

Friday, October 13

- PFC Popcorn day
- 8th Grade Girls' Basketball vs Staff
- Cross Country Practice 3:15-5:00

Principal's Message

Dear Willow Families,

Happy Friday! I hope that all of the families enjoy the long weekend.

On Wednesday, October 11th, in collaboration with the Willow Springs Police Department, we will have a Law Enforcement/Lock Down/Active Intruder/Active Shooter Drill.

This drill is a compliance requirement for the Illinois State Board of Education and must be completed on an annual basis. While these drills are never fun, it is important that our students and staff practice safety measures. We work closely with the Willow Springs Police Department to ensure that our procedures in place at school are the best and safest for our students and staff.

Please feel free to reach out to me with any questions or concerns.

Sincerely,
Dr. Alexandra Oreluk

Upcoming Dates!

Mon, October 16- Yearbook Club Meeting 315-415

Wed, Oct 18-PFC Meeting 6:00 pm

School Board Meeting 6:30

Thurs, Oct 19- Flannel day

PFC Haunted Trails Fundraiser 400-800

Fri, October 20- Fall Picture Retake Day

1st Grade Field Trip to the Corn Maze

Mon, October 23- E/C,TK & Kindergarten Field Trip

Thurs, October 26- Orange & Black Day

Bus Evacuation Drill

5th grade field trip to Planetarium

Tues, October 31- Halloween * No costumes

Willow Fall Fest

Whats for Lunch?

Monday- No School No Lunch

Tuesday- Beef Nachos

Wednesday- Chicken Sandwich

Thursday- Honey BBQ Wings

Friday- Pizza

Important Announcement for Morning Bus Riders



Dear Willow Families,

Happy Columbus Day/ Indigenous People's Day! I hope everyone is enjoying their long weekend. I am writing to ask for your support in the morning routines for our students. Please remember that students having a full night's sleep is the best way to come prepared to learn.

Also, I would like to provide some clarity regarding supervision at bus stops and on the bus. In the morning, there are no Willow Staff Members at the bus stops. In the afternoon, there are numerous Willow Staff Members that help load the buses to get students seated safely and quickly. However, only First Student staff members are on the bus going to and from school. Students should wait until the bus comes to a full and complete stop before approaching for boarding.

Since there are no Willow Staff members at the bus stops, please remind your students to follow the school wide expectations as they are held accountable for their actions at the bus stops and on the bus. The bus and bus stops are an extension of school.

As a reminder, breakfast for all students is free. That being said, we have noticed that many students are not boarding the Early Bus and taking advantage of free breakfast. Please tell your student(s) to get on the Early Bus if they want breakfast.

Please feel free to reach out to me with any questions or concerns.

Sincerely,
Dr. Alexandra Oreluk



PLEASE JOIN US FOR A PFC COSTUME PARTY AT

HAUNTED TRAILS

7759 S. Harlem Burbank, IL 60459

Thursday, October 19th from 4:00-8:00pm.

This is a family event; **ALL** students must have adult supervision.



Student slice of Cheese
Pizza & Pop \$5.00

Adult Slice of Cheese
Pizza & Pop \$6.00



Game Play Cards Available
\$10.00

Game Play card includes some rides
(BEST VALUE) \$25.00

Add Ons are available for purchase
at the Haunted Trails ticket booth



Wear your costume



CHECK IN AT THE PFC TABLE TO BE ENTERED IN OUR PFC SCHOOL RAFFLE

SKIP THE LINE AND PREORDER YOUR GAME CARDS AND MEALS BELOW. PREORDER VOUCHERS/CARDS CAN BE PICKED UP AT THE PFC TABLE

Haunted Trails PFC Family Event PRE-ORDER due **MONDAY, OCTOBER 16TH AT 9:00AM**

Student Name: _____ Homeroom: _____

Student Slice & Pop: _____ x \$5.00 = _____

Adult Slice and Pop: _____ x \$6.00 = _____

Game Play Cards: _____ x \$10.00 = _____

Game Play Cards: _____ x \$25.00 = _____

Total Enclosed: _____



WILLOW SPRINGS SCHOOL **WOLVERINES**

EARLY CHILDHOOD

10/6/23

Literacy:

This week we will continue The Three Bears.

- Vocabulary: big, large, medium, little, small, dot, red, blue, same, different
- Letter recognition of C,c, D,d
- Comprehension: Following directions and answering questions
 - Fine Motor Skills:
 - Drawing lines over, under, across
 - Coloring in
 - Tracing a line



Reminders

- Theme Thursday 10/12 – Dress like your favorite book character
- Please send a snack daily
- Please practice hand over hand name tracing
- Please turn in your family fun pumpkin
- Please turn in the field trip form – due October 13th
- Field trip to the Children's Farm – October 23rd



WILLOW SPRINGS SCHOOL **WOLVERINES**

10/06/23

Transitional Kindergarten

ASK YOUR CHILD...

What happens at the end of the story, "Going on a Leaf Hunt" ?

What are 2 new things that were added to Science center this week? (a barn and farm animals)



We will finish up "The Three Bears" this week. We will read, "Pumpkin Pumpkin" and work on sequencing, story comprehension, and retelling. In Math we are working on ABA patterns and identifying shapes. Our dramatic play area is becoming a petting zoo.

Reminders

No School on Monday, October 9th.

Please write your child's name on any sweatshirt or jacket - so that clothes go home to the correct child

Popcorn Day is October 13th

Field trip permission forms due on or before October 15th
Please continue to send in your child's lunch pics for the week

KINDERGARTEN



10/06/23

SUPERKIDS

Our new Superkid loves to go on great adventures. The only problem is that ants like to follow him wherever he goes. We will be learning to name and write uppercase and lowercase Aa. We will also learn the short sound for a-like in *ant* and *apple*. We will also be listening for the sounds of /a/ and /o/ in the middle of words like hat, socks, and pot.

MATH

We will review identifying numbers 0-10 and counting to 20 by ones. We will be taking our end-of-module assessment for Module 1 on Thursday. We will also begin Module 2, focusing on counting to tell the number of objects, comparing quantities, and making numbers up to 10 using other numbers.

SOCIAL STUDIES/SCIENCE

We will learn that things that we see and do when camping are different than everyday life.

We will learn about the importance of farms. We will also learn about fire safety.

NEWS & REMINDERS

- October 13 is Popcorn day: Cost is \$1
- Please empty the **Keep at Home** side of the folder **everyday**
- **Library Day** for Mrs. Lydon's class is **Tuesdays** and for Mrs. Overzet's class is **Thursdays**. Your child must bring back their book back in order to check out a new one.
- Children's Farm field trip on Oct. 23. -Cost for students is \$20. This includes, admission, bus, and a small pumpkin. Money is due on October 15.

Mark your calendar:

- Dress Theme Thursday, October 12: **Dress like your favorite book character.**
- School is dismissed at 2:13 on all Wednesdays.



FIRST GRADE

10/06/23

Language Arts

We will finish Unit 2 in Superkids this week.

Word Work - Students will learn to read and write *th* words within words and phrases.

Reading - Students will read and discuss grade-level literary text and vocabulary. While we read, we will discuss main topic and key details.

Writing - Students will write and answer research questions.

There will be a spelling test on Friday. Your student should practice spelling and reading the words below every night for homework.

Spelling Words

this

bath

that

path

thin

math

think

cloth

thank

moth

Math

We will be finishing up Topic 2 by learning addition and subtraction strategies.

REMINDERS

- *Mrs. Theodoropoulos has library on Tuesdays. Books are due on Mondays.
- *Mrs. Haussy has library on Wednesdays. Books are due on Tuesdays.
- *October 13 is Popcorn Day. Cost is \$1.00 per bag.
- *Our field trip to Konow's Corn Maze is Friday, October 20. Please return permission slips by October 17. Cost is \$12 per student.

Contact Us:



Mrs. Haussy - shaussy@willowspringsschool.org

Mrs. Theodoropoulos - ntheodor@willowspringsschool.org



WILLOW SPRINGS SCHOOL **WOLVERINES**

2ND GRADE

10/06/23

Super Kids

This week we will have our spelling test on next Wednesday, 10/11. We have started our Super Kids Hit Second Grade Book and are starting unit 2. We are also starting our first book club. We will learn about nouns and verbs. We will begin personal narratives.

Spelling Words

handle
middle
strong

ring
want
look

come
any
some

very
new
good

Clear Math

We will continue our Clear Math curriculum with Module 1. Students are practicing composing and decomposing numbers, comparing with greater than and less than signs, and adding using different strategies .

Reminders

- *Please charge your Chromebook every night.**
- *Make sure your child has headphones in class.**
- *Please check gold folders every night.**

3rd Grade

10/06/23

ELA

We begin Unit 2 (Animal Classification). We will observe, describe, and record animal characteristics, focus on text features and how they help us identify information as we classify living things, and review nouns, verbs, and adjectives. We will have our first list of spelling words this week.



Math

Last week we started our adding and subtracting within 1,000 unit. Student will build addition and subtraction fluency.

Science

Students will continue with lesson 2.3 Students deepen their understanding of magnetic force by finding that a magnet can attract or repel another magnet, but can only attract and not repel the metal objects moved by magnetic force.

Social Studies

Third grade is studying Natural Resources.

Every student must have a water bottle at school. Students are able to fill up their water bottles at school if needed. This helps prevent long lines at the water fountain. We sometimes have all 3-5 students in the hallway during our water and bathroom breaks, making it hard to stay on schedule.



4th Grade

10/06/23

ELA

As we near the end of Unit 1, students will take the Beginning of Year Assessment this week, which includes reading comprehension, morphology and grammar. In Unit 2, a non-fiction focused unit, we will learn about Empires in the Middle Ages.

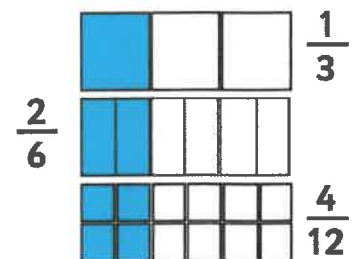
Work not finished in class may be sent home for homework.



Math

Last week we started fraction equivalence and comparisons. We will continue working on using models and equations to determine

whether
Fractions
are
equivalent.



Science

Students are introduced to argumentation and gather evidence to support a claim about what happened to the electrical system the night of the Ergstown blackout. The lesson begins with an activity in which students look for and record evidence of different forms of energy.

Social Studies

We will be studying Natural Resources.

Every student must have a water bottle at school. Students are able to fill up their water bottles at school if needed. This helps prevent long lines at the water fountain. We sometimes have all 3-5 students in the hallway during our water and bathroom breaks, making it hard to stay on schedule.



5th Grade

10/06/23

ELA

As we near the end of Unit 1, students will take the Beginning of Year Assessment this week, which includes reading comprehension, morphology and grammar. In Unit 2, a non-fiction focused unit, we will learn about Early American Civilizations.

Work not finished in class may be sent home for homework.



Math

We started our order of operations unit last week. Students will determine the order for performing the operations to solve numeric expressions.

ORDER OF OPERATIONS		
1.	P	PARENTHESES GROUPING SYMBOLS
2.	E	EXONENTS 2^3 Evaluate Powers
3.	M/D	MULTIPLICATION AND DIVISION from LEFT to RIGHT
4.	A/S	ADDITION AND SUBTRACTION from LEFT to RIGHT

Social Studies

We will be comparing Native American cultures from long ago.

Science

Field Trip to the Planetarium is on Thursday Oct 26th. The cost is \$8.00. Please send Money to your Child's homeroom teacher.



Science - Students are introduced to argumentation and gather evidence to support a claim about what happened to the electrical system the night of the Ergstown blackout. The lesson begins with an activity in which students look for and record evidence of different forms of energy.

October
6, 2023



WILLOW SPRINGS SCHOOL
WOLVERINES

6th 7th 8th
ELA

English Language Arts

Ms. Babcock, Ms. Chavez, Mr. Gilchrist, Ms. Haseltine, Ms. Kustak

6th, 7th, and 8th Grade ELA will be **MAP Testing** on **Monday and Tuesday**

6th Grade

Unit 2: "Surviving Middle School"



Students will begin their novel "Surviving Middle School" by Luke Reynolds. Students will be introduced to the novel through a webquest to learn more about the author and the non-fiction text they are reading. Students will focus on figurative language and central idea development during their novel study.



7th Grade

Unit 2: "Restart"

Last week students began their first novel "Restart" by Gordon Korman. The novel, Restart is about a seventh grade student that has amnesia and has to "restart" his life and faces many challenges as he tries to remember his old life. Students will focus on figurative language and using context clues as they work through the beginning of the novel.

8th Grade

Unit 1: "The Art of Suspense"

Last week students read "The Landlady" by Roald Dahl. Students have identified theme and begun write an argumentative thematic essay to prove their understanding of the story and how the theme develops throughout the course of the story.



Reminders

All grade levels need to bring their charged chromebook, planner, gold folder, silent reading book binder and a writing utensil to class **EVERYDAY**.

Students need to have their I.D and lanyard on their person at all times.



WILLOW SPRINGS SCHOOL **WOLVERINES**

6-8 Math with Carnegie Math

10/6/2023

- 6-8 Math: Please encourage your student to complete **daily homework assignments** and **MATHia** online workspaces at home to support their growth as a math learner.

<u>6th Grade</u> <i>Area, Volume & Surface Area</i>	6 th -graders will determine the volume and surface area of right prisms.
<u>7th Grade</u> <i>Proportionality</i>	7 th -graders will solve proportions using formal strategies. They will explore equations of proportional relationships and determine the constant of proportionality.
<u>8th Grade</u> <i>Dilations</i>	<p>8th-graders will map similar figures using transformations. Test next Thursday, October 12:</p> <ul style="list-style-type: none">• Define and identify dilations and similar figures• Identify scale factor of a dilation• Dilate geometric figures on the coordinate plane• Describe changes to the x-coordinates and y-coordinates of a figure after a dilation• Identify corresponding sides and corresponding angles of similar figures• Explain how to use transformation to verify that two figures are similar.• Describe a sequence of transformations to determine whether two figures are similar.



WILLOW SPRINGS SCHOOL **WOLVERINES**

10/6/23

6-8 Science with Amplify Science

6th Grade

This week we have learned about C. Difficile and Salmonella and their effects on the body. We have learned how antibiotics affect the human microbiome. Next week we will be working on using discussion and Evidence to provide reasoning for a claim.

7th Grade

This week we finalized our unit on Geology on Mars. Next week we will be introducing Plate Motion. We will focus on trying to find out why are fossils of species that once lived together found in different locations on Earth now?

8th Grade

This week we completed our unit on Harnessing Human energy. We will have our test on the unit on Tuesday. Starting next week we will introduce Force and Motion and will focus on answering the question How does force affect motion of objects.

Reminders

Charge Chromebooks Nightly!!

Supplies needed for class:

Folder and Notebook

Writing Utensil

Coloring Utensils

Workbook



WILLOW SPRINGS SCHOOL **WOLVERINES**

10/6/23

6-8 Social Studies with Savvas

6th Grade

This week, students learned about the ancient Phoenicians and the origins of Judaism. Next week, we will learn about the beliefs of Judaism and the history of the Jewish people!

7th Grade

This week, students learned about the New England, Middle, and Southern English colonies. Next week, we will read about colonial society, trade, and government!

8th Grade

This week, students finished the Reconstruction unit with by taking a summative test. We also started a new unit on industrial and economic growth. Next week, we will learn about mining, railroads, and western agriculture!

Reminders

- Check [teacherease.com](https://www.teacherease.com) for any missing work
- Bring all materials to class including a pencil



WILLOW SPRINGS SCHOOL **WOLVERINES**

Physical Education

10/06/23

Kindergarten–2nd Grade

K–though 2nd will be participating in warm-ups that include numbers and fitness. The unit of focus will be foot eye coordination with kicking and modified kickball.

3rd– 8th Grade

3rd through 8th will be participating in randomized fitness warm-ups targeting cardio, strength, and flexibility. The unit of focus this week will be various forms of team kickball.

Reminders

- **6th–8th grade parents– many of you have purchased a PE uniform for your student but a lot of students are wearing rentals instead of the purchased uniform. Please encourage your student to wear or find the uniform you paid for so the money you spent is being put to good use.**



WILLOW SPRINGS SCHOOL

WOLVERINES

Music

10/06/23

K-5 Music

Kindergarten is learning to identify where a pitch starts and how it changes over the course of a song.

1st and 2nd Grade have added "la" to their pitch vocabulary and are composing and singing using the pitches/handsigns of "la", "sol", and "mi"

3rd and 4th grade 3rd and 4th grade are learning the location of line and spaces pitches within the treble clef

Junior High Music

Junior high students are refining use of third string playing (Ukulele) and learning to integrate harmony and melody of the same song together (7th)

BAND HAS ITS OWN PAGE IN THE WILLOW WEEKLY NOW
SEE NEXT PAGE

How to engage at home

Sound shapes: Play short songs for your student and ask them when the music shifts between high and low pitches.

Sol/Mi/La: Ask your students to demonstrate the hand signs for sol, mi, and la.

Music Alphabet/Staff: Ask your student to show you how to draw a treble clef (link to print blank staff paper at home).



WILLOW SPRINGS SCHOOL

WOLVERINES

Band

10/06/23

Beginning Band

This week in beginning band, students practiced breathing and playing their first three notes as a group.

If your student needs help, you can read along with them in pages 2-6 of their Red "Standard of Excellence" book to help them. There are also youtube videos on setup and posture in the band google classroom students can access from their chromebooks.

The Band Syllabus agreement must be returned to Mr. Ortiz as soon as possible.

Concert Band

Concert Band Practice Material:

Practice Charts are due 10/5 (60 minute of practice)

Standard of Excellence #44-54 for 5th/6th Grade Students

Standard of Excellence #99-111 for 7th/8th Grade Students

All Students: Write in counts and be prepared to play the entire star Spangled Banner for next week.

The Band Syllabus agreement must be returned to Mr. Ortiz as soon as possible.

Reminders

Bus: If you are in concert band, the Bus picks up at 7:15 am in Sterling, see Mr. Ortiz for details if you are unsure.

Rehearsal Schedules

Beginning Band:

Beginning Band Rehearsals are as follows (subject to change):

Mondays: Woodwinds (3:20-4:10pm)

Tuesdays: Brass and Percussion (3:20-4:10pm)

Thursdays: All students (3:20-4:10pm)

Concert Band:

Concert Band Rehearsals are as follows (subject to change):

Mondays: Grade 5/6 (7:40-8:25 am)

Tuesdays: Grade 7/8 (7:40-8:25 am)

Thursdays: All students (7:40-8:25 am)



WILLOW SPRINGS SCHOOL **WOLVERINES**

10/06/23

Art

K-5 Art

Kindergarten: KL students will be starting a 6 week art rotation on Tuesday. We will begin with learning about **LINE**s in art. Students will be working on a Line Donut Project- we read the book "Donuts, The Hole Story" and learned to use line and color to decorate a donut!

1st Grade: Students in 1T will be starting a 6 week art rotation on Tuesday. Students will begin working on a Line Turtle Project. We will learn to draw turtles, then filled their shells with different lines and patterns!

2nd Grade: Students in 2M will be starting a 6 week art rotation on Tuesday. We will begin working on a painting project inspired by artist Friedensreich Hundertwasser, born in Austria in 1928. We will draw organic trees in crayon, and are painting using watercolor paint.

3rd Grade: Students in 3V are working on a rainforest flower project. We are drawing a large flower and using different marker techniques to color the flower.

4th Grade: Students in 4J are working on a Jungle Jaguar project. We are drawing a jaguar with patterns!

5th grade: Students do not have art for this quarter rotation.



6-8th Art

6th Grade: 6G students are finishing their clay monsters by glazing!

7th Grade: 7C Students are taking a break from the Peace Poster Contest, and started working on a ceramics project where they are making animal sculptures!

8th Grade: 8th grade does not have art class for this first rotation.



6th



7th



WILLOW SPRINGS SCHOOL
WOLVERINES

October 6, 2023

Mrs. Babcock, Mrs. Brockob & Mrs. Nieves

ELL & BILINGUAL NEWSLETTER

Influential Hispanics in America Hispana(o)s influyentes en América

CELIA CRUZ



Celia Cruz was known as the "Queen of Salsa." She won seven Grammy awards for her music.

SONIA SOTOMAYOR



Sonia Sotomayor was the first Hispanic U.S. Supreme Court Justice.

EDWARD JAMES OLMOS



Edward James Olmos was the first Hispanic American to be nominated for an Oscar for his role in the movie *Stand and Deliver*.

RIGOBERTA MENCHU



Rigoberta Menchú is Guatemalan. She won the Nobel Peace Prize "in recognition of her work for social justice and ethno-cultural reconciliation based on respect for the rights of indigenous peoples."

ALEX RODRIGUEZ



Alex Rodríguez is a Dominican descendant. He is a former Major League baseball player. Considered to be one of the greatest baseball players of all time.

SOFIA VERGARA



Sofia Margarita Vergara is a Colombian actress, television producer, comedian, presenter and model. She is one of the highest paid TV actresses in the world.

LIONEL MESSI



Lionel Messi is an Argentinian professional soccer player. Often considered the best player in the world.

SATCHA PRETTO



Satcha Pretto Padilla is Honduran known for being one of the elite journalists in the Spanish-speaking media in the United States.



Contact us!
Contáctenos



Mrs. Babcock cbabcock@willowsspringsschool.org
Mrs. Brockob dbrockob@willowsspringsschool.org
Mrs. Nieves bnieves@willowsspringsschool.org
EL Coordinator - Marci Ortiz mortiz@willowsspringsschool.org



WILLOW SPRINGS SCHOOL

WOLVERINES

Social Work

10/6/2023

What is the role of a School Social Worker?

School Social Work Services

RELATED SERVICES:

- Working with those problems in a child's living situation that affect the child
- Participating in special education assessment meetings as well as individual Educational Planning Meetings's adjust
- Mobilizing family, school, and community resources to enable the child to learn as effectively as possible in his or her educational program
- Assisting in devment in school. (home, school, and community)
- Preparing a social or developmental history on a child with a disability.
- Counseling (group, individual and/or family)eloping positive behavioral intervention strategies.

SERVICES TO STUDENTS:

- Providing crisis intervention.
- Developing intervention strategies to increase academic success.
- Assisting with conflict resolution and anger management.
- Helping the child develop appropriate social interaction skills.
- Assisting the child in understanding and accepting self and others.

SERVICES TO PARENT/FAMILIES:

- Working with parents to facilitate their support in their children's school adjustment.
- Alleviating family stress to enable the child to function more effectively in school &community.
- Assisting parents to access programs available to students with special needs.
- Assisting parents in accessing and utilizing school and community resources.

SERVICES TO SCHOOL PERSONNEL:

- Providing staff with essential information to better understand factors (cultural, societal, economic, familial, health, etc.) affecting a student's performance and behavior.
- Assessing students with mental health concerns.
- Developing staff in-service training programs.
- Assisting teachers with behavior management.
- Providing direct support to staff.

SCHOOL-COMMUNITY LIAISON:

- Obtaining and coordinating community resources to meet students' needs.
- Helping school districts receive adequate support from social and mental health agencies.
- Advocating for new and improved community/school service to meet the needs of students and families.
- Helping the system respond effectively to each child's needs.

SERVICES TO DISTRICTS:

- Assist in developing and implementing educational programs for children for exceptional children.
- Developing alternative programs for students with attendance concerns or involvement with the law.
- Identifying and reporting child abuse and neglect.
- Providing consultation regarding school law and school policy including IDEA and Section 504.
- Providing case management for students and families requiring multiple resources.

The School Social Work Team for the 2023-24 academic school year:

Jamie Glas - jglas@willowsspringsschool.org

Maribeth Fagan - mfagan@willowsspringsschool.org

Please feel free to reach out with any questions or concerns regarding your students social and emotional growth within the school environment.



WILLOW SPRINGS SCHOOL **WOLVERINES**

10/6/23

Mrs. Strauch's Classes

S.I. K-2 ELA with Superkids

KINDERGARTEN

We will continue with our Golly book this week. We will listen for the Gg sound at the beginning of words and also at the end of words. We will take a unit assessment on letter Cc Oo and Gg.

FIRST GRADE

We will wrap up Unit 1 in Superkids this week. Students will decode and encode sh, ch, and tch words. We will continue practicing our pronouns. Our spelling test for the words below will be on 10/13. Please have your student practice reading and spelling them each night for homework.

Spelling Words: **my she her he his**

SECOND GRADE

We have started Unit 2 of Superkids and this week we will continue our work on identifying nouns and verbs. Our spelling test for the words below will be on 10/11. Please have your student practice them each night for homework.

Spelling Words: **ring want look good come some**

Reminders:

- When homework is assigned, please return it the next day.



WILLOW SPRINGS SCHOOL **WOLVERINES**

10/06/23

Ms. Baricovich

S.I. K-2 & 4th Grade Classes with ClearMath

Kindergarten-We will be continue on identifying , writing and counting numbers 1-9, and counting by ones to 10. We will continue Module 2.

1st Grade-We will continue Topic 2 which focuses on addition and subtraction strategies to 20.

2nd Grade-We are continuing Module 1 Topic 1, focusing on composing and decomposing numbers in various ways in order to practice addition, subtraction and number ordering skills.

4th Grade-We are continuing Topic 2 and round numbers beyond 1,000.

S.I. Math Reminders

-Please join Remind If you have not done so.

Text @17math2324 to the number 81010

-When homework is assigned, please return it the next day, unless stated otherwise.

If you have any questions or concerns, contact me via email at ibaricov@willowsspringsschool.org or via Remind.

Thank you!

Message from Nurse Drogosz

****IMPORTANT REMINDER**

The child health exam is required for entrance into Preschool, Kindergarten and 6th grade and/or transferring from an out of state school. The health history portion of the physical exam form must be completed and signed by the parent in order for the physical to be valid. The State of Illinois requires that all student health exams be submitted before October 15 of the year of the required exam or within 30 days of enrollment for new students from out of state. Please contact the nurse's office if the mandated health exam is scheduled after October 15th to avoid exclusion.

The State of Illinois requires that all students entering Kindergarten or entering school for the first time from out of state shall have an eye exam before by October 15, 2023 of the year of the required exam or within 30 days of enrollment for new students from out of state.

The State of Illinois requires that all students in Kindergarten, second and sixth grades have an oral health exam performed by a licensed dentist.

Illinois requirement is the sports physical must be completed each year and returned to the coaches before the student is allowed to participate in practice or interscholastic sports.

Please schedule an appointment if the exam has not been done and submit as soon as possible.

Loyola Mobile Clinic is scheduled for Thursday, October 12th.

***Note** Health exam forms are available on the school website.

Thank you,

Norene Drogosz

ndrogosz@willowspringsschool.org

School Nurse

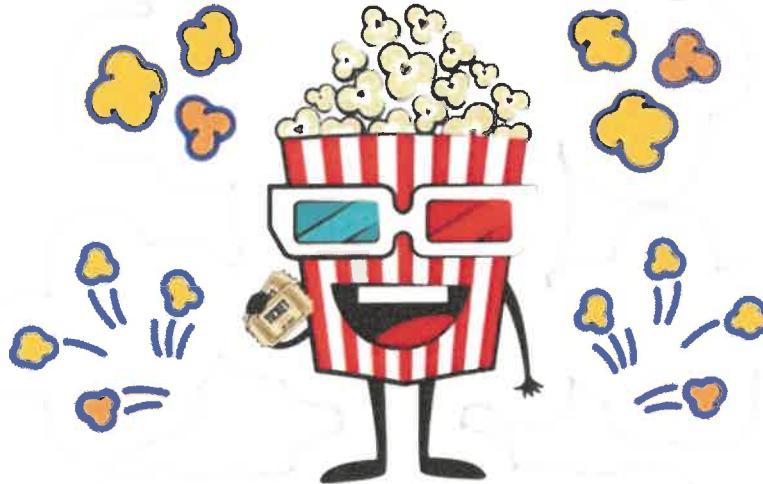
Phone (708) 839-6828

Fax(708) 839-8399

Parents for Children



WILLOW SPRINGS SCHOOL
WOLVERINES



**POPCORN
DAY**

PFC will be hosting a Popcorn day on Friday, October 13. Popcorn is \$1.00

Please complete the order form below and return it with your student by **Tuesday, October 10 at 9am.**

Student Name: _____

Homeroom Teacher: _____ Grade Level: _____

How many popcorn bags: _____ Amount enclosed: _____

Only students signed up with IVY LEAGUE may be dropped off prior to **8:00am**. To sign up please call 815-464-1265

BEFORE & AFTER SCHOOL

Willow Springs School District 108

Willow Springs School



Available Half Days

We are at your school for half days!



Fun with Friends

A rewarding program that balances each child's physical, intellectual, and social needs.



Flexible Scheduling

Pick & choose your schedule that works for YOU!

ACTIVITIES

- Sports & Recreation
- Arts & Crafts
- STEM Education
- Snack
- Homework

K-8TH

REGISTRATION FEE IS \$50			
Fee Schedule	AM Only	PM Only	AM & PM
Attend 5 DAYS	\$87.00	\$99.00	\$151.00
Attend 4 DAYS	\$76.00	\$87.00	\$119.00
Attend 3 DAYS	\$56.00	\$69.00	\$99.00
Attend 2 DAYS	\$42.00	\$49.00	\$65.00
Attend 1 DAY	\$24.00	\$27.00	\$38.00
Drop Off	\$29.00	\$32.00	\$43.00
Half Day Up-charge	\$10.00 <small>Child must bring a sack lunch.</small>		

6:30am until school starts. After school until 6:00pm.

REGISTER NOW
at ivyleaguekids.org

815-464-1265

Accepts Illinois Action for
Children Child Care Assistance
Program





TeacherEase.

Welcome to Willow Springs School online student information database, Teacherease. Here as parents, you have access to your student's('):

- *Yearly Registration
- *Grades & Attendance
- *School meal tracking & billing
- *Report Cards
- * Fees
- *Teacher Emails
- *Grades/Missing assignments

1. Go to the App store and search : TeacherEase
2. It is free to download. Click **GET**
3. Type in your email address and password or click : Sign Up to create an account



Notification Settings

Can TeacherEase send me notifications?:



Do not send notifications between:

09:00 PM - 07:00 AM

Automatically notify me about:

If you have already created a Teacherease account and are not receiving any notifications, please change the settings in the **COMMUNICATION PREFERENCES** tab

Clicking this tab will help you configure how Teacherease communicates with you. You will be able to turn on notifications for emails, app notifications, text messaging and voice calls. Real time notifications for grade updates, missing work, new assignments , attendance, low lunch balances.

If you cannot change the preferences please call Ms. Flores at 708-839-6828 or email cflores@willowspringsschool.org

Willow Springs School uses Text messaging and Voice Calls from 833-712-2713. Please **OPT IN** to stay up to date on important messages or calls from Willow Springs School.

****Please add this phone number to your mobile phone as NOT SCAM OR SCAM LIKELY**



August 2023 (7 attendance days) (7)

S	M	T	W	T	F	S
		1	2	3	4	5
6	7	8	9	10	11	12
13	14	15	16	17	18	19
20	21 (X)	22 (X)	23 (A)	24	25 (K)	26
27	28	29	30	31		

September 2023 (20 attendance days) (27)

S	M	T	W	T	F	S
					1	2
3	4 (H)	5	6	7	8	9
10	11	12	13	14	15	16
17	18	19	20	21	22	23
24	25	26	27	28	29	30

October 2023 (20 attendance days) (47)

S	M	T	W	T	F	S
1	2	3	4	5	6 (X)	7
8	9 (H)	10	11	12	13	14
15	16	17	18	19	20	21
22	23	24	25	26	27 (H)	28
29	30	31				

November 2023 (18 attendance days) (65)

S	M	T	W	T	F	S
			1 (A)	2	3	4
5	6	7	8	9	10	11
12	13	14	15	16	17	18
19	20	21	22	23	24	25
26	27	28	29	30		

December 2023 (16 attendance days) (81)

S	M	T	W	T	F	S
					1	2
3	4	5	6	7	8	9
10	11	12	13	14	15	16
17	18	19	20	21	22	23
24	25	26	27	28	29	30
31						

January 2024 (17 attendance days) (98)

S	M	T	W	T	F	S
	1	2	3	4	5	6
7	8	9	10	11	12	13
14	15 (H)	16	17	18	19 (H)	20
21	22	23	24	25	26	27
28	29	30	31			

OPENING/CLOSING DAYS OF SCHOOL

August 23	First Day of School	(A)
August 25	First Day of Kinder	(K)
May 31	Last Day of School (11:45 Dismissal)	(Ω)

STUDENT NON-ATTENDANCE DAYS

August 21	PLD	(X)
August 22	PLD	(X)
September 4	Labor Day	(H)
October 6	PLD	(X)
October 9	Columbus/Indigenous	(H)
November 1	Parent/Teacher	(▲)
November 22-24	Thanksgiving Break	(H)
Dec 23 -Jan 7	Winter Break	(H)
January 15	MLK Day	(H)
February 7	Parent/Teacher	(▲)
February 16	PLD	(X)
February 19	Presidents' Day	(H)
March 23-31	Spring Break	(H)
May 27	Memorial Day	(H)
June 19	Juneteenth	(H)
July 4	Independence Day	(H)

EARLY-RELEASE DAYS

Every Wednesday	- 2:13
-----------------	--------

PARENT-TEACHER CONFERENCES

November 1	12:00 - 7:00	(▲)
February 7	12:00 - 7:00	(▲)

GRADING PERIODS

1st	October 27 (45)	①
2nd	January 19 (45)	②
3rd	March 22 (42)	③
4th	May 26 (44)	(Ω)

GRADUATION

May 28	(★)
--------	-----

EMERGENCY DAYS

Emergency Days may be used as school days if school closes unexpectedly during the regular school year.

June 3	(○)
June 4	(○)
June 5	(○)
June 6	(○)
June 7	(○)

February 2024 (18 attendance days) (116)

S	M	T	W	T	F	S
				1	2	3
4	5	6	7 (A)	8	9	10
11	12	13	14	15	16 (K)	17
18	19 (H)	20	21	22	23	24
25	26	27	28	29		

March 2024 (16 attendance days) (132)

S	M	T	W	T	F	S
					1	2
3	4	5	6	7	8	9
10	11	12	13	14	15	16
17	18	19	20	21	22 (H)	23
24	25	26	27	28	29	30
31						

April 2024 (22 attendance days) (154)

S	M	T	W	T	F	S
	1	2	3	4	5	6
7	8	9	10	11	12	13
14	15	16	17	18	19	20
21	22	23	24	25	26	27
28	29	30				

May 2024 (22 attendance days) (176)

S	M	T	W	T	F	S
			1	2	3	4
5	6	7	8	9	10	11
12	13	14	15	16	17	18
19	20	21	22	23	24	25
26	27 (H)	28 (★)	29	30	31 (Ω)	

June 2024

S	M	T	W	T	F	S
						1
2	3 (○)	4 (○)	5 (○)	6 (○)	7 (○)	8
9	10	11	12	13	14	15
16	17	18	19 (H)	20	21	22
23	24	25	26	27	28	29
30						

July 2024

S	M	T	W	T	F	S
	1	2	3	4 (H)	5	6
7	8	9	10	11	12	13
14	15	16	17	18	19	20
21	22	23	24	25	26	27
28	29	30	31			